

# User's Manual

# eClient<sup>®</sup> SC1

## Stand Type Windows-based Terminal

### IMPORTANT

Please confirm the version of the software built in eClient, and refer to the suited User's Manual (Refer to the User's Manual Version List on next page).

This is the manual for the following software version.

- \* Microsoft Windows CE: 4.20 Rev. 3.0.2 or later
- \* Microsoft Terminal Server Client: Ver. 8.0.1 or later
- \* Ctrix ICA Client Software: Ver. 7.23 or later

### CAUTION

Please carefully read the PRECAUTION section in the user's manual enclosed with the unit before using the unit.

This product has been adjusted specifically for use in the region to which it was originally shipped. If operated outside the region to which it was originally shipped, the product may not perform as stated in the specifications.



# User's Manual Version List

A handling description changes with versions of the software built in eClient. Please refer to below.

**NOTE**

- The version of software built in eClient can be checked with a [System]-[ICA] tab of [Terminal Properties].

**OS: Microsoft Windows CE .NET**

Software Manual	Microsoft Windows CE	Microsoft Windows Terminal Server	ICA Client Software
A (This manual)	4.20 Rev.3.0.2 or later	Version 8.0.1 or later	Version 7.23 or later

---

## SAFETY SYMBOLS

This manual uses the safety symbols below. They denote critical information. Please read them carefully.



### WARNING

Failure to abide by the information in a WARNING may result in serious injury and can be life threatening.



### CAUTION

Failure to abide by the information in a CAUTION may result in moderate injury and/or property or product damage.



Indicates a prohibited action.



Indicates to ground for safety.

---

Copyright© 2004 EIZO NANA O CORPORATION. All rights reserved. No part of this manual may be reproduced, stored in a retrieval system, or transmitted, in any form or by any means, electronic, mechanical, or otherwise, without the prior written permission of EIZO NANA O CORPORATION.

EIZO NANA O CORPORATION is under no obligation to hold any submitted material or information confidential unless prior arrangements are made pursuant to EIZO NANA O CORPORATION's receipt of said information. Although every effort has been made to ensure that this manual provides up-to-date information, please note that EIZO monitor specifications are subject to change without notice.

---

ENERGY STAR is a U.S. registered mark.

Apple and Macintosh are registered trademarks of Apple Computer, Inc.

DPMS is a trademark and VESA is a registered trademark of Video Electronics Standards Association.

VGA is a registered trademark of International Business Machines Corporation.

Windows is a registered trademark of Microsoft Corporation.

ScreenManager and PowerManager are trademarks of EIZO NANA O CORPORATION.

FlexScan and EIZO are registered trademarks of EIZO NANA O CORPORATION.

---



As an ENERGY STAR® Partner, EIZO NANA O CORPORATION has determined that this product meets the ENERGY STAR guidelines for energy efficiency.

---

# TABLE OF CONTENTS

<b>1. INTRODUCTION</b> .....	<b>5</b>
1-1. General Description .....	5
1-2. Features .....	5
1-3. Package Contents.....	6
1-4. Controllers & Connectors .....	7
<b>2. CONNECTING the eClient SC1</b> .....	<b>9</b>
2-1. Setting up the eClient SC1 .....	9
<b>3. SETTING UP the eClient SC1</b> .....	<b>15</b>
<b>4. ADDING &amp; CHANGING A CONNETION NAME</b> .....	<b>25</b>
4-1. Adding a Connection Name.....	25
4-2. Setting an Autostart Connection .....	28
4-3. Modifying a Connection Name.....	28
<b>5. How to control</b> .....	<b>29</b>
5-1. Logging on or off the WTS .....	29
<b>6. USING THE TERMINAL PROPERTIES</b> .....	<b>35</b>
6-1. General .....	36
6-2. Display.....	37
6-3. Control Panel.....	38
6-6. ICA Settings (ICA Protocol only) .....	46
6-7. Server.....	47
6-8. Security .....	48
6-9. System.....	50
<b>7. SOFTWARE UPDATING/INSTALLATION</b> .....	<b>51</b>
<b>8. PRACTICAL SETUP</b> .....	<b>55</b>
8-1. SC1 settings .....	55
8-2. Short cut command by keyboard .....	58
<b>9. TROUBLESHOOTING</b> .....	<b>59</b>
<b>10. CLEANING</b> .....	<b>60</b>
<b>11. SPECIFICATIONS</b> .....	<b>61</b>

---

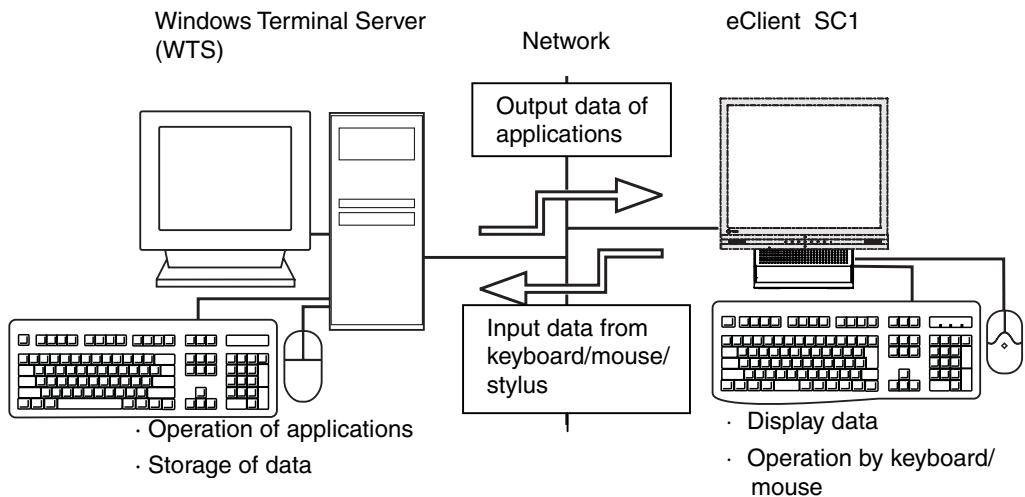
# 1. INTRODUCTION

Thank you very much for purchasing the EIZO eClient SC1.

## 1-1. General Description

The SC1 is used as a thin client, which connects to the terminal service installed Windows Terminal Server (Hereafter defined WTS) as listed below and accesses applications or data provided from the WTS.

- Server (WTS: Windows Terminal Server)  
Microsoft Windows 2000 Server / Advanced Server / Datacenter Server  
Microsoft Windows Server 2003 Standard Edition / Enterprise Edition / Datacenter Edition



## 1-2. Features

- Lower TCO (Total Cost of Ownership)
- Saves Space and Power Consumption
- Less Heat, Less Noise
- Windows CE OS-based
- Serial Port for Modem/PDA (\*Hayes AT compatible modem supported)
- 2 USB downstream ports (SC1: Standard Rev. 1.1)
- Local Web Browser added as a default connection
- PC card slot for modem card or LAN card
- Wake on LAN supported
- Network utility software, "Network Administrator Version 3.0" supported
- Two installation types; EIZO Monitor mounted / Stand alone
- EIZO Monitor detachable stand type

- 
- Secondary power switch (wired)

## 1-3. Package Contents

Please contact your local dealer for assistance if any of the listed items are missing or damaged. Please make sure that all the items listed are in the package.

- SC1
- Mouse (FDM-LCS1)
- Power Cord
- Switch Box (1.8 m)
- Signal Cable (FD-C29) (50 cm)
- User's Manual
- Monitor Attachment Unit: for mounting monitor \*<sup>1</sup>
- Power Cord (50 cm): for mounting monitor\*<sup>1</sup>
- Clamp for cables: for mounting monitor\*<sup>1</sup>

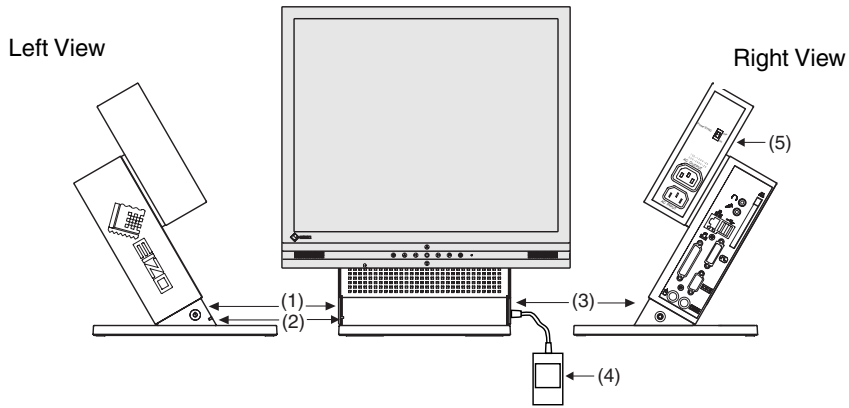
\*<sup>1</sup>The monitor attachment unit, the power cord, and the clamp for cables are used when attaching a monitor in SC1. Installation of a monitor should follow the system administrator.

### **NOTE**

- A keyboard is not included. It must be purchased separately.
- Please use the enclosed mouse. EIZO NANA O CORPORATION will no be held responsible for accident or damage caused by the use of a mouse manufactured by other companies.
- We recommend that you retain the original packing materials in case of future need.

# 1-4. Controllers & Connectors

## Controllers



- (1) Power Button
- (2) Power Indicator

\* L567 used as an example

Power Indicator	State of the unit
Blue	<ul style="list-style-type: none"> <li>• Operation mode</li> <li>• Screen saver is active <sup>*1</sup></li> <li>• No picture is displayed on the monitor <sup>*1,*2</sup></li> </ul>
Off	Power is off (Wake on LAN standby)
<sup>*1</sup> [Procedure to return to the operation mode] - Operate the mouse or keyboard.	
<sup>*2</sup> The monitor is in the power save mode when the power save function of the monitor is set.	

- (3) Connector for Switch Box<sup>\*3</sup>
- (4) Switch Box<sup>\*3</sup>
- (5) Power Supply Control Switch (POWER SYNC)<sup>\*4</sup>

<sup>\*3</sup> The secondary power switch makes it easy to turn the SC1 on and off when stowed away under the desk or out of reach. When the enclosed switch box is connected to the connector, it can be used as a power button. The power button on the SC1 can be used simultaneously even if the switch box is connected.

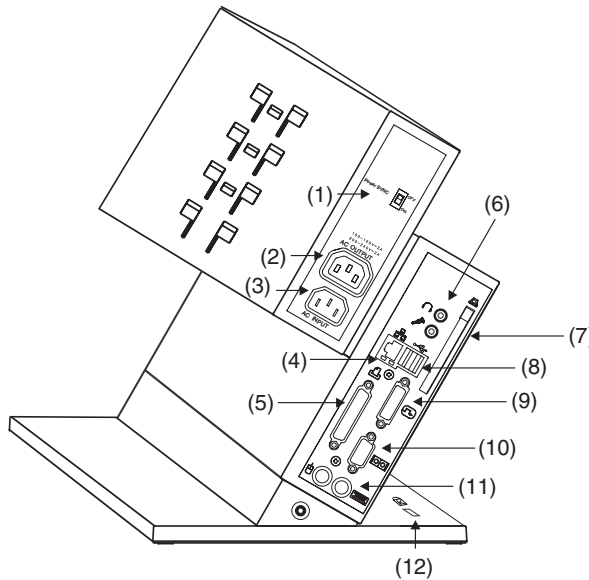
<sup>\*4</sup> Please refer to pg. 12 for details on the power supply control switch (POWER SYNC).

### NOTE

- When turning off/on the unit, leave the unit off for a few seconds before turning it on again.
- Do your part to conserve energy, turn off the unit when your finished using it. Complete energy use can only be stopped by disconnecting the unit from the power supply.

---

## Connectors



- (1) Power Supply Control Switch (POWER SYNC)...Same with (5) on P.7
- (2) Power Connector(AC output)
- (3) Power Connector(AC input)
- (4) Ethernet Connector (10 Base-T, 100 Base-TX)
- (5) Parallel Connector
- (6) Headphone Connector  
Microphone Connector
- (7) PC Card Slot
- (8) USB Port (Downstream) x 2
- (9) DVI-I Output Connector
- (10) Serial Port (RS-232C)
- (11) Mouse Connector  
Keyboard Connector
- (12) Security Lock\*<sup>1</sup>

\*<sup>1</sup> This allows for connection of a security cable. This lock supports Kensington's MicroSaver security system. For further information, please consult:

Kensington Technology Group

2855 Campus Drive, San Mateo, CA 94403 USA

Tel: 800-650-4242, x3348

Intl: 650-572-2700 Fax: 650-572-9675

<http://www.kensington.com>



---

# 2. CONNECTING the eClient SC1

This chapter explains how to connect the eClient SC1 to a WTS.

## 2-1. Setting up the eClient SC1

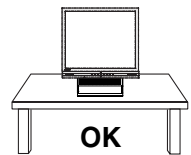
Please observe the following cautions when connecting the SC1.

### **WARNING**

---

#### **Place the eClient SC1 on a strong, stable surface.**

A unit placed on an inadequate surface may fall, resulting in injury or equipment damage. If the unit falls, disconnect the power immediately and have the unit checked by a qualified service engineer before using it again. Using a unit after it has been dropped may result in fire or electric shock.



---

#### **Set the unit in an appropriate location.**

Not doing so may result in fire, electric shock, or equipment damage.

- \* Do not place outdoors.
- \* Do not place in the transportation system (ship, aircraft, trains, automobiles, etc.)
- \* Do not place in a dusty or humid environment.
- \* Do not place in a location where the steam comes directly on the screen.
- \* Do not place near heat generating devices or a humidifier.



---

#### **The Monitor Attachment Unit supports only EIZO L767, L567, L557, L367.**

Mounting other monitors to the unit may result in injury or equipment damage. Contact your system administrator for details of the attachment.

- \* The illustrated monitors in this section are L567. Monitors are not included in the package.

---

#### **Maximum load capacity of AC outlet is 2 A.**

Connecting unit with more than 2 A may result in fire, electric shock or other damage.

---

## Mounting EIZO monitor to the SC1

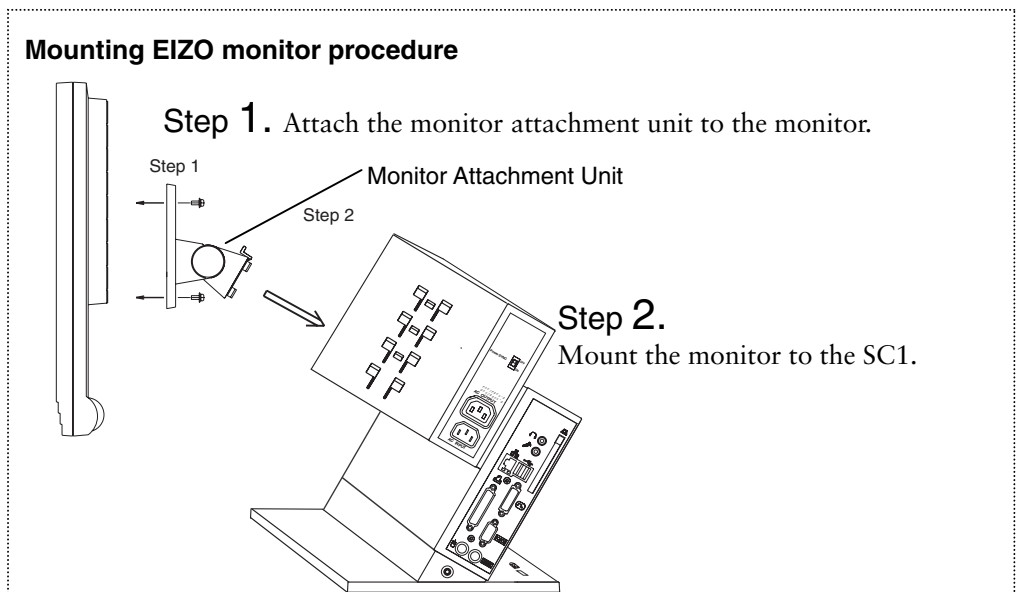
**When using other monitors than EIZO, proceed to step 3.**

The Monitor Attachment Unit of SC1 supports the EIZO L767, L567, L557, and L367, so EIZO monitor mounted SC1 is available.

### NOTE

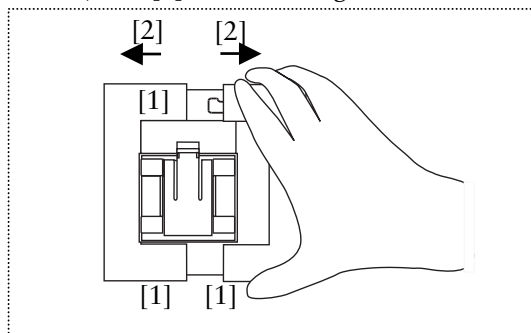
- Prepare the following, when mounting a monitor to the SC1.

Monitor	L767, L567, L557, L367
Screws	The screws used for the monitor original stand
Power Cord	Power Cord (50 cm) which is included into the SC1 package.

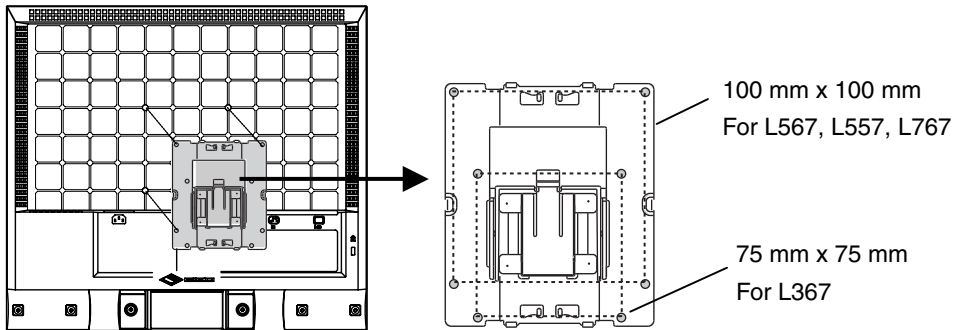


### 1. Attach the monitor attachment unit to the monitor.

- (1) [1] Hold the center of the cover of the monitor attachment unit (upper side and bottom side) and [2] slide them rightward or leftward to remove the covers.



- (2) Lay the LCD monitor down on the soft cloth or cushion not to scratch the panel surface.
- (3) Remove the original stand by loosening the screws.
- (4) Attach the monitor attachment unit to the monitor securely, by using the screws, which used for the original stand.



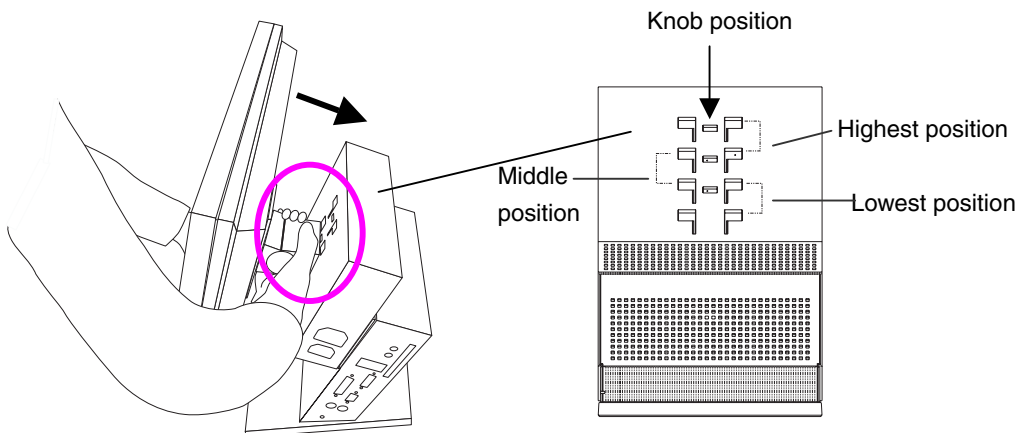
- (5) Get back the cover to the monitor attachment unit.

## 2. Mount the monitor to the SC1.

- (1) Fit the protruding portion of the monitor attachment unit (4 points) to the attachment position of SC1 (4 points), and insert it in downward, by pressing down the knob of the monitor attachment unit into the knob position of SC1.

### NOTE

- Monitor mount positions  
SC1 has three attachment position (Highest position, Middle position and lowest position). Please be sure to attach in each position as follows.
- Refer to the P. 62 for the dimensions figure according to monitor size.



- (2) Grip both side of the monitor firmly with both hands and adjust the monitor angle as desired.

---

## Connecting the signal cable and power cables

3. Plug the signal cable into the connector at the rear of the monitor and the other end of the cable into the video connector on the DVI-I connector of the SC1
4. After connecting, secure the connection with the screw-in fasteners.
5. Plug the power cord (50 cm), included into the package, into the power connector on the rear of the monitor and the other end of the cable into the power connector (AC outlet) of the eCleint, or into a power outlet.

### **WARNING**

---

**Use the enclosed power cord and connect to the standard power outlet of your country.**

Be sure to remain within the rated voltage of the power cord.  
Not doing so may result in fire or electric shock.

---

**The equipment must be connected to a grounded main outlet.**

Not doing so may result in fire or electric shock.



---

**Maximum load capacity of AC outlet is 2 A.**

Connecting unit with more than 2 A may result in fire, electric shock or other damage.

---

### **Power Supply Control Switch (POWER SYNC)**

When the monitor's power cord is connected to the AC output power supply of SC1, the monitor's power supply can be linked with on/off of SC1. Choose ON from the power supply control switch (POWER SYNC).

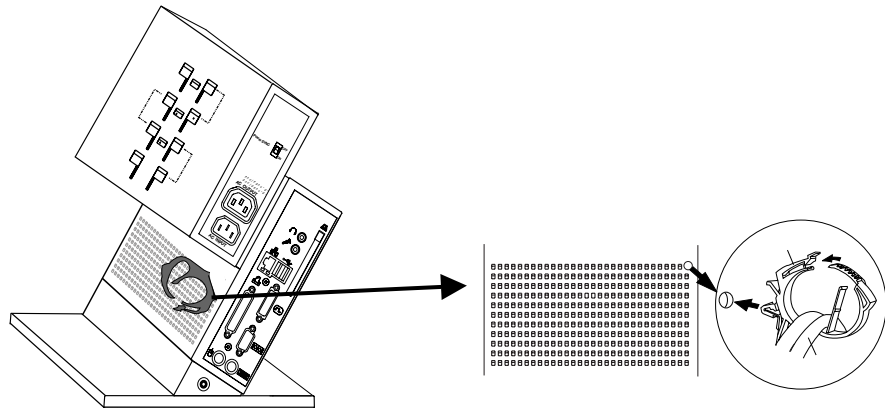
When the power button of SC1 is turned on or off...

Power Supply Control Switch (POWER SYNC)	Power supply for the monitor
ON	The monitor's power supply is linked, and it turns on or off simultaneously.
OFF (default)	Since the monitor's power supply is not linked, please turn the monitor's power supply on or off independently.

---

**NOTE****• Bundling cables**

After all connection has been made, please bundle the cables with the clamp included into the package, so that the cables do not obstruct the paths as follows.

**• Clamp installation**

## Connecting the peripheral devices to SC1

**NOTE**

- Before connecting the SC1, confirm the following:
  - The SC1 is turned off.
  - The WTS is turned on.
- Connect the peripherals to the appropriate connectors of the unit.

- 6.** In case of connecting the WTS through LAN:  
Connect the SC1 to the network with an Ethernet cable.

In case of a dial-up or dial-in connection:  
Connect the SC1 to a modem or a modem card.

**NOTE**

- Please remove the lid on the side of the SC1 before connecting a LAN card or a modem card.

- 7.** Plug a keyboard and a mouse into the SC1.
- 8.** When using other devices, connect them to the appropriate connectors.

---

**9. The switch box is connected to the attached connector on the SC1 if needed.**

The secondary power switch makes it easy to turn the SC1 on and off when stowed away under the desk or out of reach. When the switch box is connected to the connector, it can be used as a power button. The power button on the SC1 can be used simultaneously even if the switch box is connected.

**10. If using other devices, please connect them to the appropriate connectors.**

**11. Plug the power cord into the power connector.**

If the power cord is connected to a power supply wall socket, regardless of ON or OFF operation of the power button, the SC1 will start up.

**NOTICE**

- Note that the SC1 also starts up whenever electric power is intercepted from power failure or master power shutdown, and power supply is restored after that.

 **WARNING**

---

**Use the enclosed power cord and connect to the standard power outlet of your country.**

Be sure to remain within the rated voltage of the power cord.  
Not doing so may result in fire or electric shock.

---

**The equipment must be connected to a grounded main outlet.**

Not doing so may result in fire or electric shock.



---

**NOTE**

- The screen, which SC1 can display, is as follows.

Analog Output		Digital Output	
640 x 480 @60 Hz	8 bbp	640 x 480 @60 Hz	8 bbp
	16 bbp		16 bbp
	32 bbp		32 bbp
800 x 600 @60 Hz	8 bbp	800 x 600 @60 Hz	8 bbp
	16 bbp		16 bbp
	32 bbp		32 bbp
1024 x 768 @60 Hz	8 bbp	1024 x 768 @60 Hz	8 bbp
	16 bbp		16 bbp
	32 bbp		32 bbp
1280 x 1024 @60 Hz	8 bbp	1280 x 1024 @60 Hz	8 bbp
	16 bbp		16 bbp
	32 bbp		32 bbp

---

# 3. SETTING UP the eClient SC1

This chapter presents how to prepare for a connection with a WTS when the eClient SC1 starts up for the first time.

## 1. Turn on the eClient SC1.

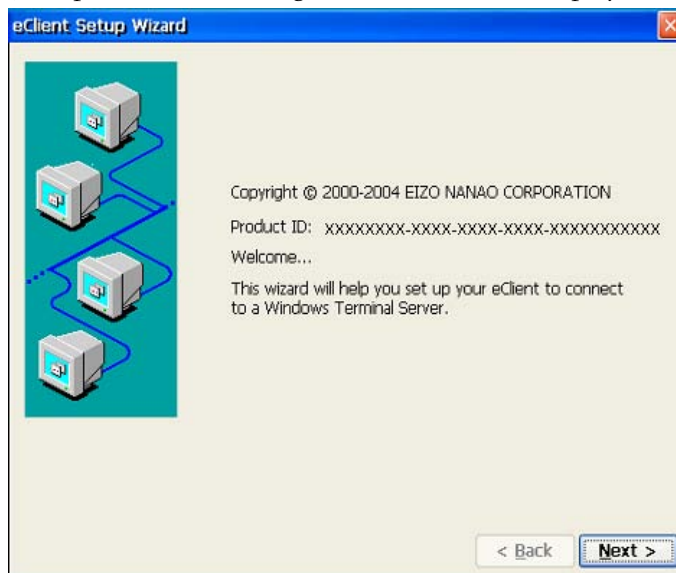
The power indicator turns green and a picture appears on the screen.

### NOTE

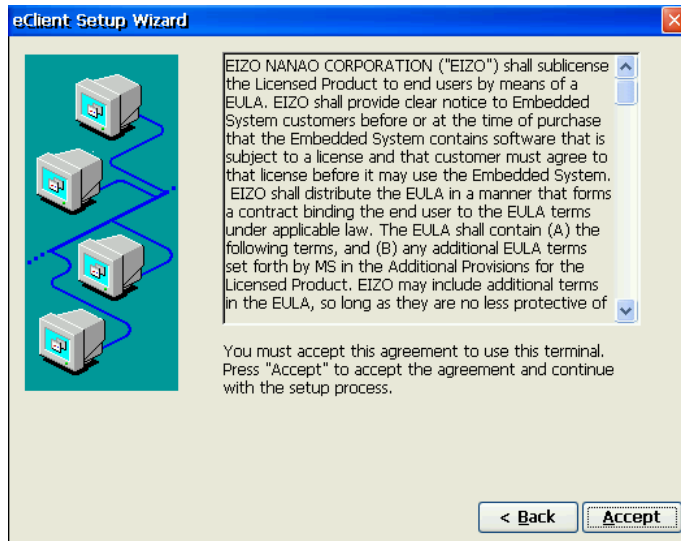
- When no picture is displayed, or when the message (No keyboard connected. / No mouse connected.) is shown on the screen, please refer to “8. Troubleshooting” on page 59.

## 2. “eClient Setup Wizard” is displayed.

(Set up the SC1 according to directions of the displayed dialog box.)



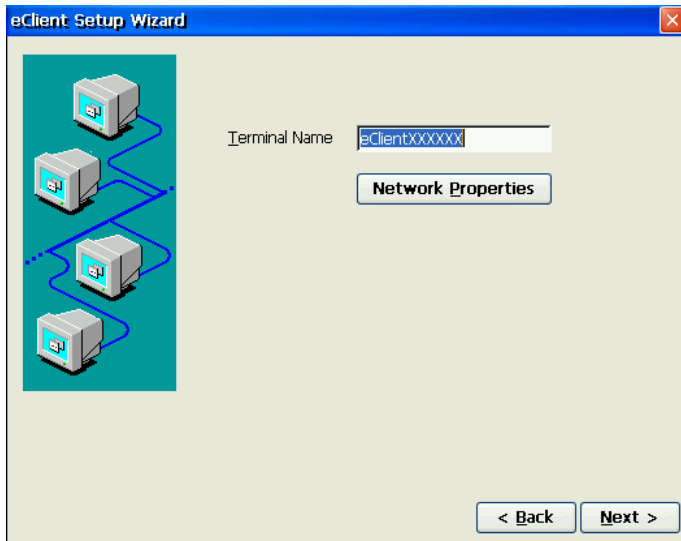
### 3. End User License Agreement page is displayed.



Read the content and click [Accept] to continue.



## 4. Set up the network environment.

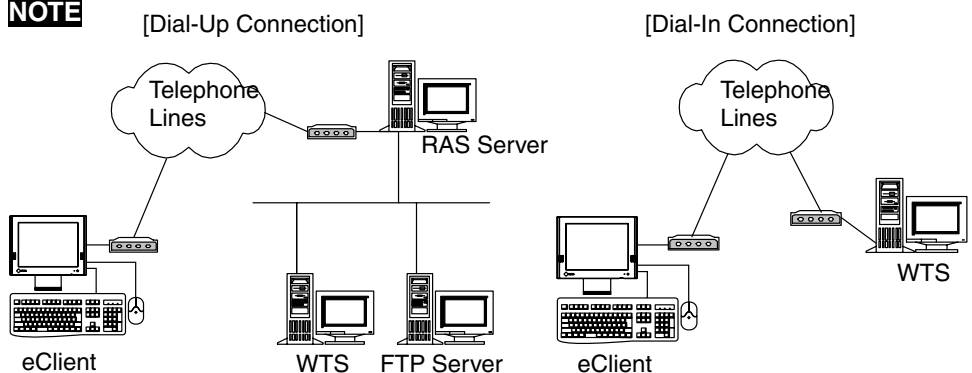


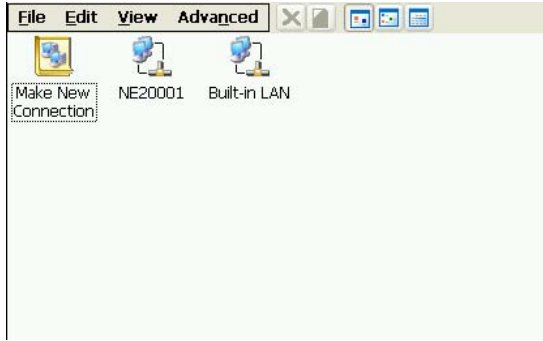
[Terminal Name] ..... Type the name to identify this unit on the network.

Click [Network Properties] and set up connection information according to the connection method to WTS/Web server.

Connection method	Reference page
<ul style="list-style-type: none"> <li>In case of connecting the WTS/Web through Built-in LAN</li> </ul>	p.18
<ul style="list-style-type: none"> <li>In case of connecting with a NE2000 compatible LAN card:</li> </ul>	p.18
<ul style="list-style-type: none"> <li>In case of connecting with a Cisco wireless LAN card/ Agere wireless LAN card:</li> </ul>	p.19
<ul style="list-style-type: none"> <li>In case of a dial-up connection:</li> </ul>	p.20
<ul style="list-style-type: none"> <li>In case of the dial-in connection (ICA protocol only) to log on to WTS</li> </ul>	Go to step 5 * Skip the [Network Properties] settings

### NOTE





Example;  
In case of connecting with a  
NE2000 compatible LAN card

**In case of connecting the WTS/Web through Built-in LAN:**

(1) Double-click [Built-in LAN] icon.



- [IP Address] ..... Type the IP address of the unit.
- [Name Servers]..... Type the IP address of each server when DNS or WINS is used.
- [Advanced]..... Type the transmission speed and MAC Address of a network.

**In case of connecting with a NE2000 compatible LAN card:**

(1) Double-click [NE 20001] icon.

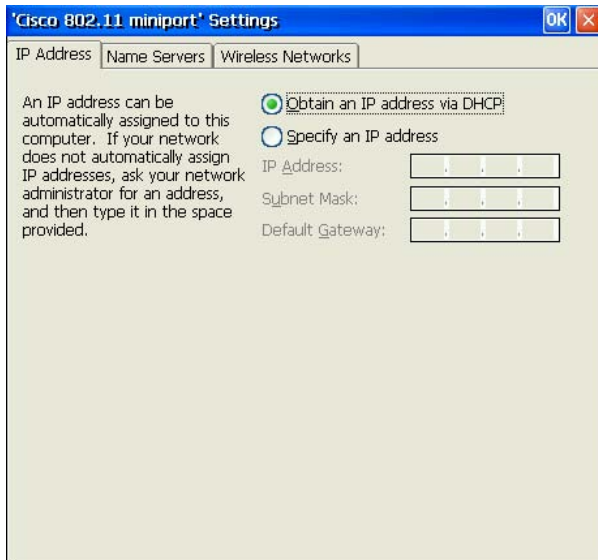


- [IP Address] ..... Type the IP address of the unit.
- [Name Servers]..... Type the IP address of each server when DNS or WINS is used.

---

**In case of connecting with a Cisco wireless LAN card/Agere wireless LAN card:**

(1) Double-click [CISCO1]/[WLAGS461] icon.



[IP Address] ..... Type the IP address of the unit.

[Name Servers] ..... Type the IP address of each server when DNS or WINS is used.

[Wireless Networks]

.....Set the connection setting with a wireless LAN card.

**NOTE**

- In case of selecting [Obtain an IP address via DHCP], deactivate the built-in LAN by the procedure below.
  - (1) Right-click [Built-in LAN] icon
  - (2) Select [Disable] in the displayed dialog.

---

**In case of a dial-up connection:**

- (1) Double-click [Make New Connection] icon.
- (2) Type a name for the connection and select the connection type (Dial-Up Connection).
- (3) Select a model, set up the TCP/IP settings and Security settings.
- (4) Type the phone number for the connection.
- (5) In case of a dial-up connection, the information of local location needs to be set up. Set up the information in the later procedure 8.

**NOTE**

- In using the following case, set up in addition to the WTS/Web server information settings.
  - When you use VPN (Virtual Private Network)
    - (1) Double-click [Make New Connection] icon.
    - (2) Type a name for the connection and select [Virtual Private Network (PPTP)] or [Virtual Private Network (L2TP)].
    - (3) Type host name or IP address and set up the TCP/IP settings and Security settings.
  - When you use ADSL
    - (1) Double-click [Make New Connection] icon.
    - (2) Type a name for the connection and select [PPP over Ethernet (PPPoE)].
    - (3) Type PPPoE service name (or blank for any service) and set up the TCP/IP settings and Security settings

- Set up a Remote Connection

By setting up a Remote Connection, the WTS/Web server can be connected easily.

- (1) Double-click [Make New Connection] icon.
- (2) Type a name for the connection and select [Remote Connection Setup].
- (3) Select the desired connection from the [Available Connections] list and click [Add] button to set in the [Current Connections]. (Connections listed in the [Current Connections] will be executed with the listed order.)
- (4) Select the [Make default connection] check box.

A small window will be displayed on the right bottom of the screen.

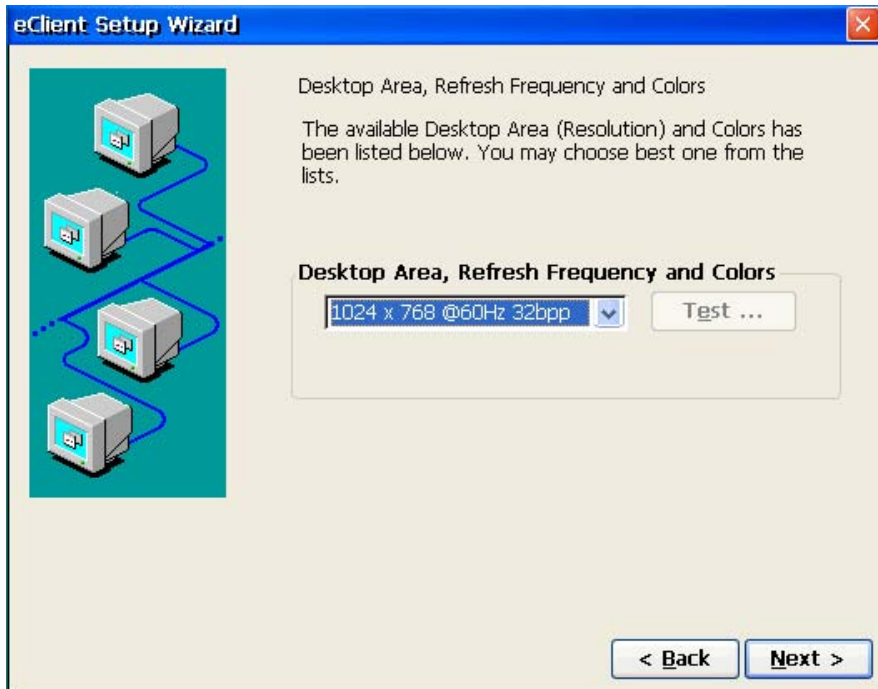


Clicking an active button of the small window starts the connection listed in the [Current Connections].

To set an automatically start connection when the eClient SC1 boots up, select the [Connect automatically on boot up] check box.

Click [Next].

## 5. Setup the desktop area; resolution, refresh frequency and colors.



[Desktop Area, Refresh Frequency and Colors]

.....Set the resolution, refresh frequency and colors. The screen which SC1 can display is as follows.

640 x <u>480</u> @60 Hz	8 bpp
	16 bpp
	32 bpp
800 x <u>600</u> @60 Hz	8 bpp
	16 bpp
	32 bpp
1024 x <u>768</u> @60 Hz	8 bpp
	16 bpp
1280 x <u>1024</u> @60 Hz	8 bpp
	16 bpp
	32 bpp

[Test...] .....A test pattern is displayed.

### NOTE

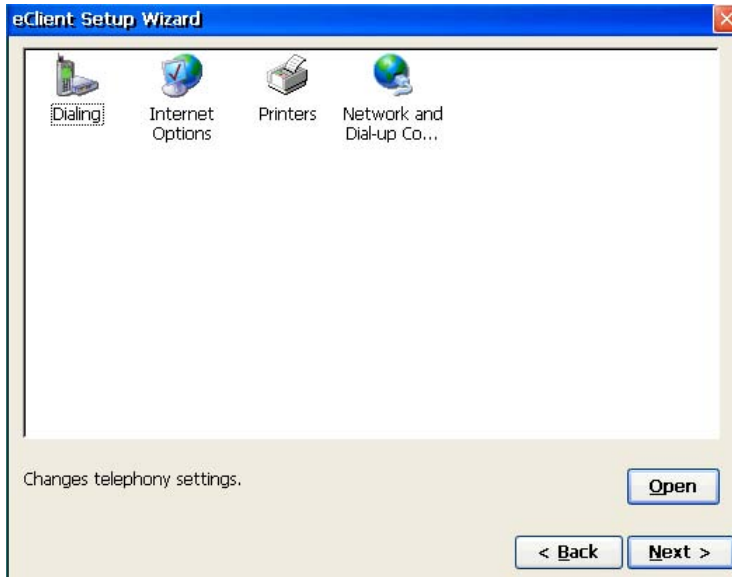
- [High Color] setting after WTS connection can be available only when connecting with WTS, which version is 5.1 or later.
- After WTS connection, the WTS setting may control the desktop color.

Click [Next].

---

## 6. The following page is displayed.

Set each icon settings following from step 7 to 9.



## 7. Set up the browser connection.

Set up if you are setting up a web browser connection.

(1) Select [Internet Options] icon and click [Open].



[General] .....Set up the browser.

[Connection] .....Set up the connection method to the browser.

[Security] .....Set up the security for the connection to the browser.

[Advanced] .....Set up the display method of the browser.

---

## 8. Set up the printer.

Set up if you are using a local printer.

### NOTE

- The following is required to install a local printer.
  - A printer is connected to the serial connector, the parallel connector or a USB port.
  - An RDP protocol is used for connection to a WTS.
  - Microsoft Windows 2000 Server / Advanced Server / Datacenter Server / Microsoft Windows Server 2003 Standard Edition / Enterprise Edition / Datacenter Edition is installed in a WTS.

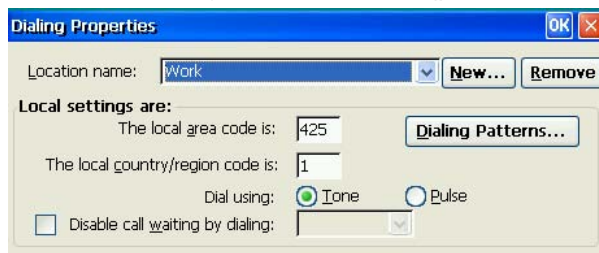
- (1) Select [Printer] icon and click [Open] icon.
- (2) Select [Add printer] icon and click [Open] icon.
- (3) “WTB Printer Wizard” is displayed (Follow the direction of the dialog box.).

1. Select a printer port.  
(Select “COM 1” for connecting to the serial connector, “LPTx” for the parallel connector or the USB port.)
2. Select a model of your printer.
3. Name your printer.

## 9. Setup the Local sender's setting

Setup if you are connecting to WTS/Web server by dial-up connection.

- (1) Select [Dialing] icon and click [Open] icon.

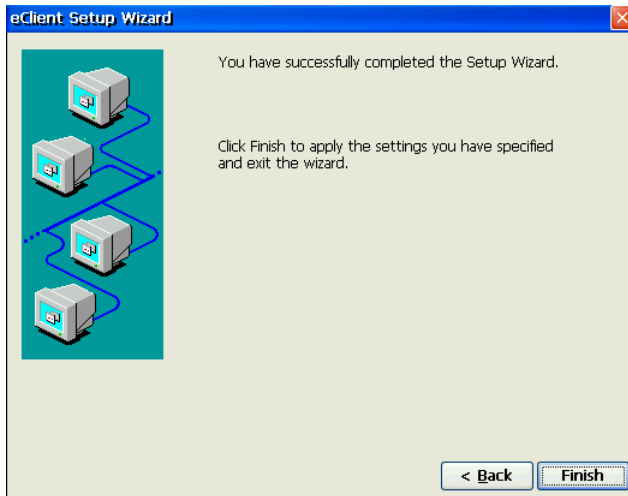


[Location name].....Choose the sender's location (click [New] to add a new sender's location).

[Local Settings are:] .....Setup the local settings.

---

**10.** The last page of the “eClient Setup Wizard” is displayed.



Click [Finish].

Click [Yes] if a “Terminal Settings change” dialog box is displayed.

The “Terminal Connection Manager” dialog box will be displayed after restarting.

**NOTE**

- Click [No] to finish the “eClient Setup Wizard” and display “Terminal Connection Manager” on the screen. The setting is not activated until the SC1 is restarted.



---

# 4. ADDING & CHANGING A CONNECTION NAME

This chapter shows how to add, delete, and modify connection names to a WTS. All the settings are managed in the “Terminal Connection Manager”.

## 4-1. Adding a Connection Name

These are settings for the server connection.

Each protocol has different settings. Please install the appropriate settings.

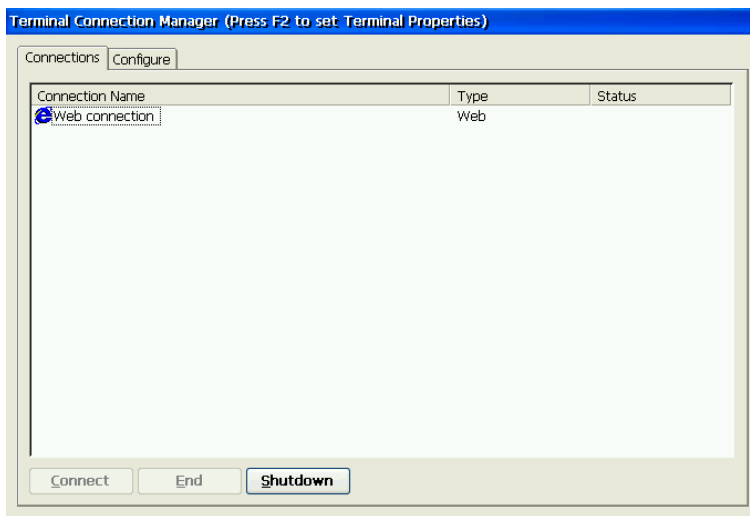
- In use of the Microsoft Remote Desktop Client (RDP) page 25
- In use of the Citrix ICA Client (ICA) page 27

### **NOTE**

- Please install Citrix MetaFrame server into the Server when using the ICA protocol.

## In Use of RDP Protocol

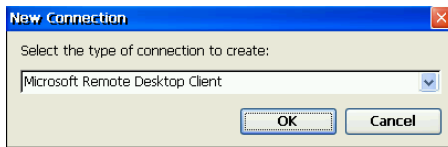
### 1. Display [Terminal Connection Manager].



Click the [Configure] tab and [Add...] to set the connection information of the WTS.

---

## 2. Protocol selection dialog box is displayed.



Select the “Microsoft Remote Desktop Client” (RDP).

## 3. “WTS Connection Wizard” is displayed. (Setup as following the wizard.)

- (1) Type the connection name and the name of the Server.
- (2) Setup to enable an Automatic Logon to the WTS after connecting if you want.
- (3) Select whether to display the Windows desktop screen or start up an application.

Clicking [Finish] to return to the “Terminal Connection Manager” dialog box, the registered connection name is displayed in the [Connection Name].

### [Editing connection setting]

[Edit connection] dialog box, which is displayed by clicking [Edit...] button, modifies attributes of the WTS connections.

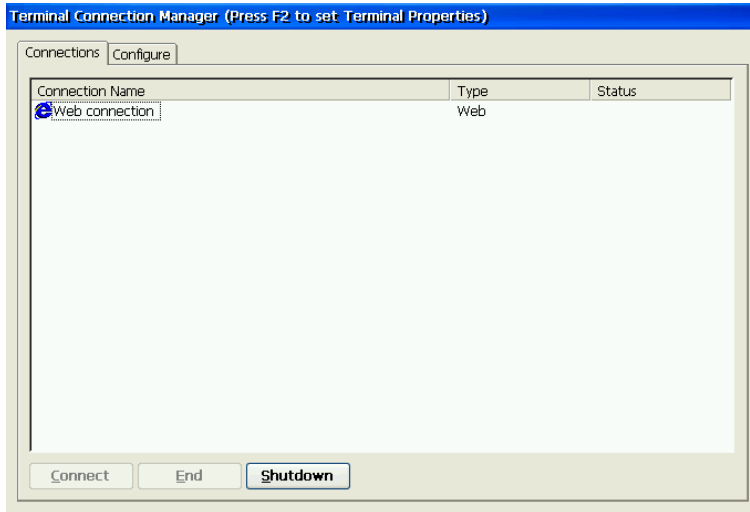
### **NOTE**

- In case of Windows 2000 Server connection, set the 256 colors to the display color when the SC1 logs on the server. When colors other than 256 are set, the screen is not displayed in a normal color.
- Please repeat step 2 to 3 to entry more than two kinds of connections.

---

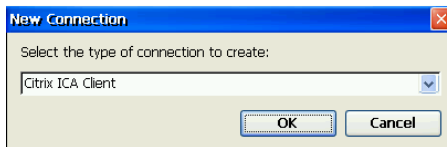
## In Use of the ICA protocol

### 1. Display [Terminal Connection Manager].



Click the [Configure] tab and [Add...] to set the connection information of the WTS.

### 2. “New Connection” dialog box is displayed on the screen.



Select the “Citrix ICA Client” (ICA).

### 3. “Specify Connection Type” is displayed. (Setup as following the wizard.)

- (1) Choose a connection type (Network Connection / Dial-In) for the remote application.
- (2) Setup a server or modem according to a connection type
  - (1) Type a connection name of the WTS.
  - (2) Select whether to display the Windows desktop screen or start up an application.
  - (3) Setup to enable an Automatic Logon to the WTS after connecting if you want.
  - (4) Set the desktop color of the Windows desktop after WTS connection.
  - (5) Setup the compression, encryption and sound.
  - (6) Setup the firewalls settings.

---

Clicking [Finish] to return to the “Terminal Connection Manager” dialog box, the registered connection name is displayed in the [Connection Name].

#### **[Editing connection setting]**

[Edit connection] dialog box, which is displayed by clicking [Edit...] button, modifies attributes of the WTS connections.

#### **NOTE**

- Please repeat the step 2 to 3 when you adding another connection name.

## **4-2. Setting an Autostart Connection**

This function configures a connection to start automatically each time the eClient SC1 is turned on. (This function is available for a LAN connection.) Select the desired connection name for Autostart Connection and click [Startup...].

[Make the selected connection your Default connection.]

.....This makes the selected connection name your default connection.

[Automatically start the selected connection at startup.]

.....This makes the selected connection to start automatically each time the eClient SC1 is turned on. The setting is effective from the next startup.

#### **NOTE**

- To connect to the default WTS connection set in the “Web Startup” dialog box, press [Ctrl] + [Alt] + [Home] keys.

## **4-3. Modifying a Connection Name**

### **Deleting a Connection**

Select the connection name you want to delete, click [Delete].

### **Editing a Connection**

Select the connection name you want to modify, click [Edit...]. [Edit Connection] dialog box or [Edit Connection Details] is displayed, edit the settings according to a connection protocol.

---

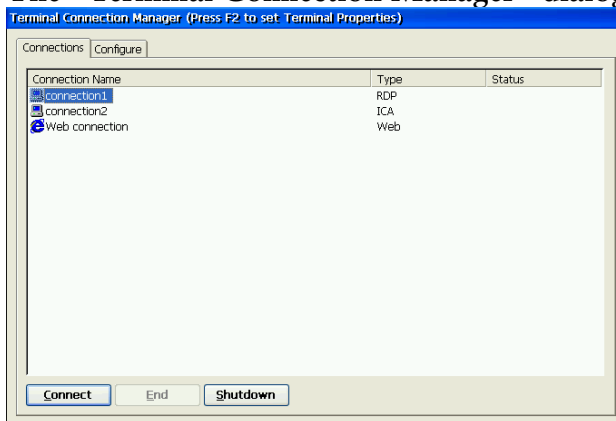
# 5. How to control

This chapter shows how to log on to and log off from a WTS.

## 5-1. Logging on or off the WTS

### Logging on to the WTS

1. Turn on the SC1.
2. The “Terminal Connection Manager” dialog box will be displayed.



Please follow the instruction depending on the network environment of the SC1.  
(Contact your system administrator for the connection environment.)

- (1) **Connecting and logging on to the WTS through the local network:**  
Go to step 3.
- (2) **Connecting and logging on to the WTS with the dial-up connection:**  
Click the active button on the right bottom of the screen.



Click the button to connect through a dial-up. Check the clock is running, and go on to step 3.

- (3) **Connecting and logging on to the WTS through a dial-in:**  
Go to step 3.

3. Click the [Connections] tab.

Select the desired [Connection Name] and click [Connect] (or simply double click the connection name).

- 
4. The SC1 connects to the WTS and the “Log On to Windows” dialog box is displayed.



Enter your [User name] and [Password], and then click [OK] to log on to the WTS. After logging on, the SC1 allows you to use the Microsoft Windows applications running on the WTS.

**NOTE**

- If an automatic logon connection is selected, this menu will not appear and you can log on to the WTS automatically.

---

## Logging off the WTS

If your SC1 starts its operation with a desktop:

### 1. Log off the WTS.

- (1) Close all the applications.
- (2) Select [Start] on the taskbar.
- (3) Select [Shut Down...] and select [Logoff] of the [Shut Down Windows] dialog box.
- (4) Click [OK] on the Logoff Window.  
The session ends and logs off from the WTS automatically. The “Terminal Connection Manager” dialog box will be displayed.  
If it's connected through a dial-up, click the active button on the right bottom of the screen.



Click the button to disconnect the dial-up connection.

### 2. Shut down the SC1.

There are 3 ways to shut down the unit.

- Click [Shut down] at the “Terminal Connection Manager” dialog box (or press the power button). The “eClient Shut down” dialog box will be displayed. Select [Shut down].
- Press the power button. The “eClient Shut down” dialog box will be displayed. Press the power button again.
- Press the power button and leave the unit for 20 seconds. The unit will shut down automatically.

---

If your SC1 starts its operation with an application:

## 1. Log off the WTS.

Close the applications to log off from the WTS. The “Terminal Connection Manager” dialog box will be displayed.

If it's connected through a dial-up, click the active button on the right bottom of the screen.



Click the button to disconnect the dial-up connection.

## 2. Follow the step 2 of “If your SC1 starts its operation with a desktop” to shut down the SC1.

### **NOTE**

- It is possible to disconnect from the WTS without closing any applications in use (or without logging off). (The last view of the application is displayed when the next connection to the WTS is made.)

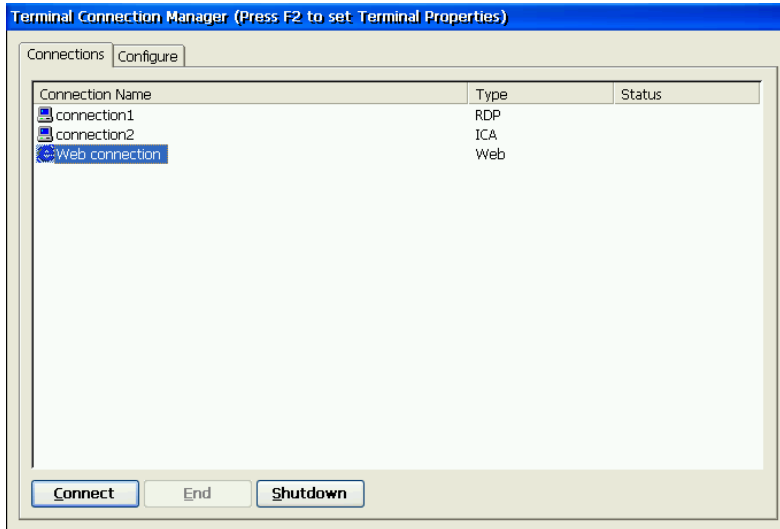


---

## Opening/Closing the Local Web Browser

### Opening the Local Web Browser

1. Turn on the SC1.
2. The “Terminal Connection Manager” dialog box will be displayed.



Please follow the instruction depending on the network environment of the SC1.  
(Contact your system administrator for the connection environment.)

- (7) If the web server is on the same network (Intranet):  
Go to step 3.
- (8) If the web server is not on the same network, and dial-up connection is needed (Internet):  
Click the active button on the right bottom of the screen.



Click the button to connect through a dial-up. Check the clock is running, and go on to step 3.

3. Click the [Connections] tab.

Select [Web connection] and click [Connect] (or simply double click [Web connection]).

4. The local web browser opens.

It is possible to browse web pages on the internet.

---

## Closing the Local Web Browser (SC1)

### 1. Close the local web browser.

Select [Close] on the [File] and close the local web browser.  
The “Terminal Connection Manager” dialog box will be displayed.

If a dial-up connection is made, click the active button on the right bottom of the screen.



Click the button to disconnect the dial-up connection.

### 2. Shut down the SC1.

There are 3 ways to shut down the unit.

- Click [Shut down] at the “Terminal Connection Manager” dialog box (or press the power button). The “eClient Shut down” dialog box will be displayed. Select [Shut down].
- Press the power button. The “eClient Shut down” dialog box will be displayed. Press the power button again.
- Press the power button and leave the unit for 20 seconds. The unit will shut down automatically.

#### **NOTE**

- It is possible to disconnect from the local web server without closing the browser.

# 6. USING THE TERMINAL PROPERTIES

This chapter presents how to modify all settings of the eClient SC1 using the “Terminal Properties”.

To display the “Terminal Properties” during logging on, press F2 in the “Terminal Connection Manager” dialog box.

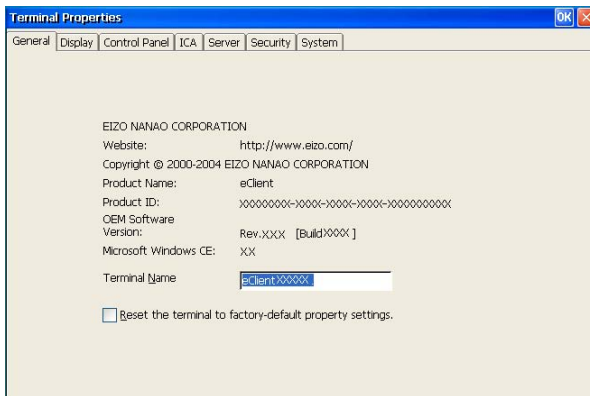
## Settings and adjustments of “Terminal Properties”

Tab name	Contents	Remarks	Refer to
General	Product information, Terminal Name	Display the Product information	p.36
	Reset	Reset the terminal to factory-default settings	
Display	Desktop Area and Refresh Frequency and Colors	Resolution, refresh frequency and colors.	p.37
	Screen Saver	Screen Saver	p.38
Control Panel	Dialing	Dial Properties (Local Settings)	p.38
	Keyboard	Keyboard settings	p.39
	Password	Password Settings	p.40
	Mouse	Mouse Settings	p.40
	Volume & Sounds	Volume settings & Sounds selection	p.40
	Date/Time	Date / Time / Time Zone	p.41
	Certificates	Certification list and import	p.42
	DHCP Settings	DHCP Server settings	p.42
	Add-on	List and remove Installed software	p.43
	Internet Options	Internet Settings	p.43
	Printers <sup>1</sup>	Local printer settings	p.44
	Network & Dial-up connection	Installed network and dial-up connection	p.45
	ICA <sup>1</sup>	ICA Client software	
ICA Client Configuration			
ICA Client Feature Settings			
Server	FTP Service	FTP server settings	p.47
Security	Terminal Security	Terminal Security (ON/OFF)	p.48
	Network Administrator	Administrator Console IP address	p.49

System	Software	Windows CE Version, Terminal server Client version/build, Boot software version/build, Update	p.50
	Hardware	Serial Number	
	Network	Network settings information	

\*1 Applicable only for ICA

## 6-1. General



### Product Information

[General] tab shows the product name, Product ID, Windows CE Revision, version, and Terminal name.

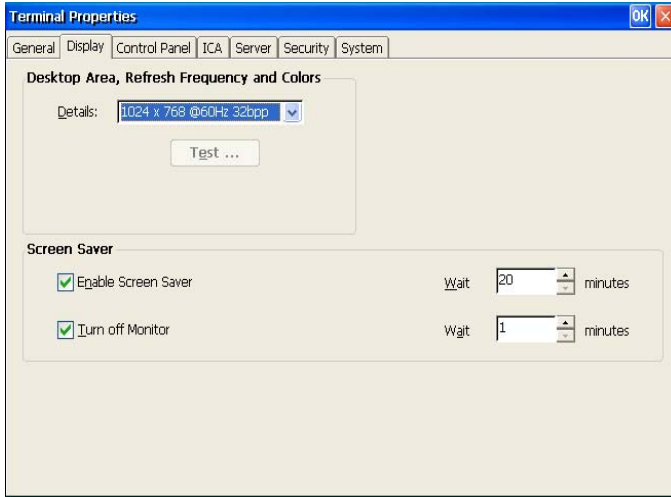
### Resetting to Default

- (1) Select the [Reset the terminal to factory-default property settings] check box.
- (2) The “System Settings Change” dialog box is displayed, click [Yes].
- (3) “Terminal Properties” is displayed.

Click [OK].

Confirmation window is displayed, click [Yes] to restart the terminal. “eClient Setup Wizard” will be displayed after restarting the terminal.

## 6-2. Display



### Resolutions / Desktop Colors

[Desktop Area, Refresh Frequency and Colors]

.....Set the resolution, refresh frequency and colors. The screen which SC1 can display is as follows.

640 x <u>480</u> @ <u>60</u> Hz	8 bpp
	16 bpp
	32 bpp
800 x <u>600</u> @ <u>60</u> Hz	8 bpp
	16 bpp
	32 bpp
1024 x <u>768</u> @ <u>60</u> Hz	8 bpp
	16 bpp
1280 x <u>1024</u> @ <u>60</u> Hz	8 bpp
	16 bpp
	32 bpp

[Test...] .....A test pattern is displayed.

#### **NOTE**

- [High Color] setting after WTS connection can be available only when connecting with WTS, which version is 5.1 or later.
- After WTS connection, the WTS setting may control the desktop color.

## Screen Saver

[Enable Screen Saver] .....Set the screen saver. Select the check box, and set an idle period into the [Wait] box.

[Turn off monitor] .....Set the “Turn off monitor”. Select the check box, and set an idle period into the [Wait] box.

### NOTE

- Power saving system of the monitor  
After the “Turn off monitor” idle period passed, the connected monitor shift to the power save mode when the monitor’s power save function is set.
- Do your part to conserve energy, turn off the unit when you are finished using it. Complete energy use can only be accomplished by disconnecting the unit’s power supply cord from the plug receptacle.

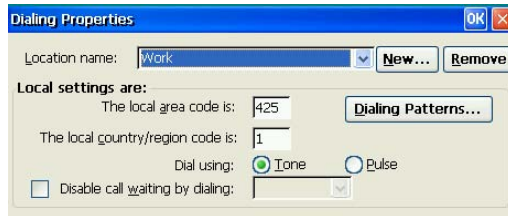
## 6-3. Control Panel



Items	Functions
Dialing	Set the local dialing informations.
Keyboard	Customizes the keyboard settings.
Password	Sets the password of the terminal.
Mouse	Customizes the keyboard settings.
Volume & Sounds	Assigns sounds and controls the volume level.
Date/Time	Sets the date, time, and time zone for the terminal.
Certificates	Sets the certificates settings.
DHCP Options	Sets the DHCP, DHCP Options.
Add-on	Installs and removes programs and Windows components.
Internet Options	Configure the Internet display and connection settings.
Printers	Adds, removes, and configures local and network printers.
Network and Dial...	Connects to other computers, networks, and the Internet.



## Dialing

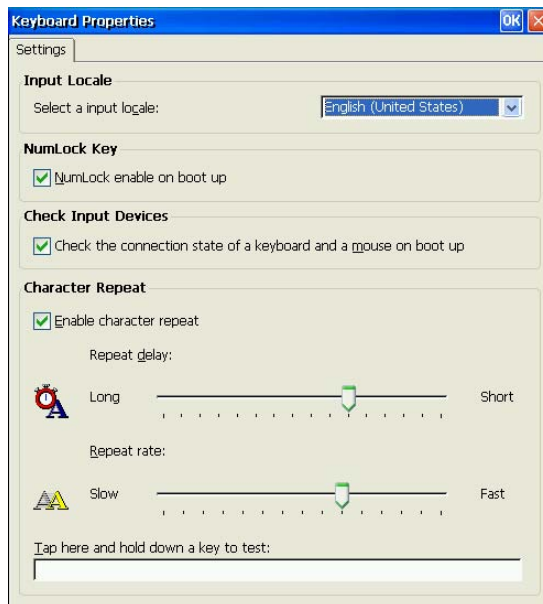


[Location name].....Choose the sender's location (click [New] to add a new sender's location).

[Local Settings are:] .....Setup the local settings.



## Keyboard



[Input Locale] .....Selects a keyboard language.

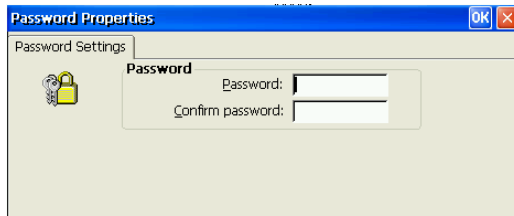
[NumLock Key] .....Enables/cancels NumLock function on start-up.

[Check Input Devices].....Enables/cancels checking the connection state of a keyboard and a mouse on start-up. When a keyboard and/or mouse are not connected on start-up, the error message is displayed. When you use neither a mouse nor a keyboard intentionally and you do not display an error message on start-up, uncheck this function.

[Character Repeat].....Allows adjusting the speed at which a character repeats when hold down a key.



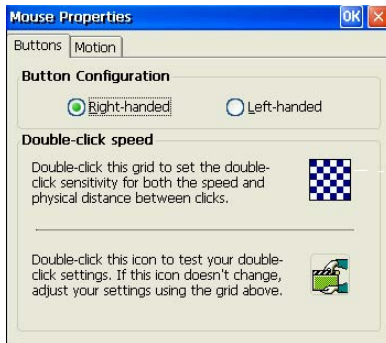
## Password



[Password] .....This enables password settings on FTP service (p.47) and Security functions (p.48).



## Mouse

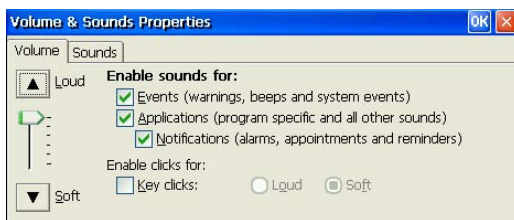


[Buttons] .....Assigns the primary mouse button and the secondary mouse button.

[Motion] .....Adjusts the speed at which the pointer moves on your screen and how fast the mouse pointer accelerates as you move the mouse.



## Volume & Sounds



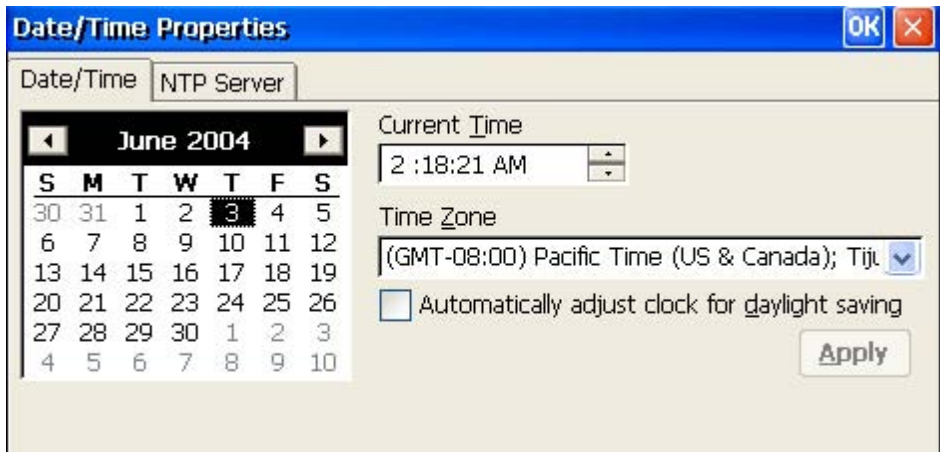
[Volume] .....Select the check boxes to enable sounds for events, applications, and notifications.

[Sounds] .....Select sounds for each case.





## Date / Time



### NOTE

- Date and time will return to the default settings if the power cord is unplugged.

[Date/Time] .....Set date, current time, or time zone.

[NTP Server] .....Synchronize time with the NTP Server.

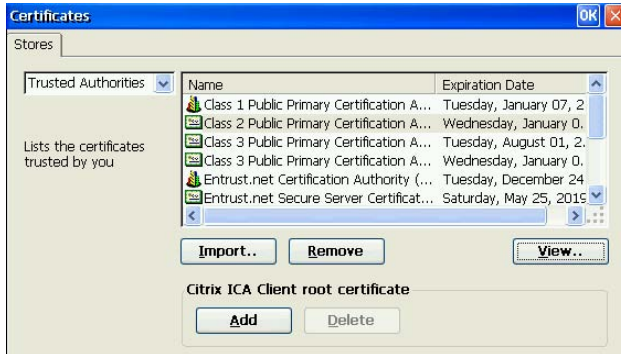
Select when to synchronize time with the NTP server  
(on every boot up or every time clicking the  
[Synchronize] button.)

### NOTE

- Synchronizing time at startup is effective when the SC1 is connecting WTS/Web Server using a Built-in LAN connection or connection with a LAN card.
- Getting the NTP Server information from the DHCP Server needs to satisfy the following:
  - \* Connect the WTS/Web Server by using a Built-in LAN connection or connection with a LAN card
  - \* Use the DHCP Server to get information such as IP address
  - \* Set the NTP Server option at the DHCP Server.





## Certificates



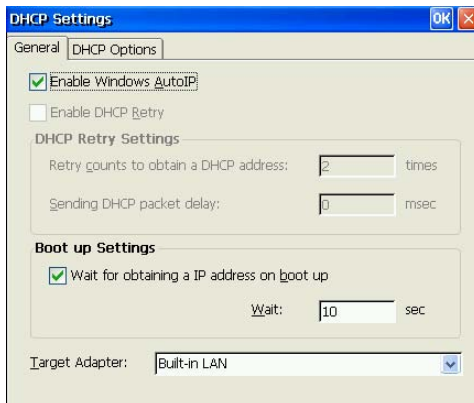
Lists the certificates stored in the SC1. A certificate can be registered, if an external disk is connected to this product, a certificate file can be imported.

### NOTE

- When using the Secure Gateway, select its certificate and click [Add]. By clicking the button, the certificate can be used. (The certificate's icon changes from  to .)



## DHCP Settings

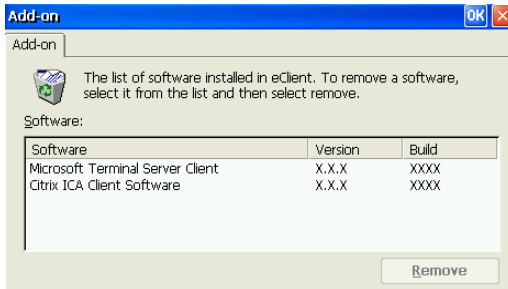


[General] ..... This allows the user to receive IP information from a DHCP server.

[DHCP Options] ..... Select the [Enable DHCP Options] check box to receive essential information about the SC1 from the DHCP server every time the SC1 is turned on. Refer to “Practical Setup” on page 55 for details.



## Add-on



Add-on lists all application software installed in eClient. To remove software, select it and click [Remove].

### NOTE

- Neither Microsoft Terminal Server Client nor Citrix ICA Client Software is removed.



## Internet Options



[General].....Setup the browser.

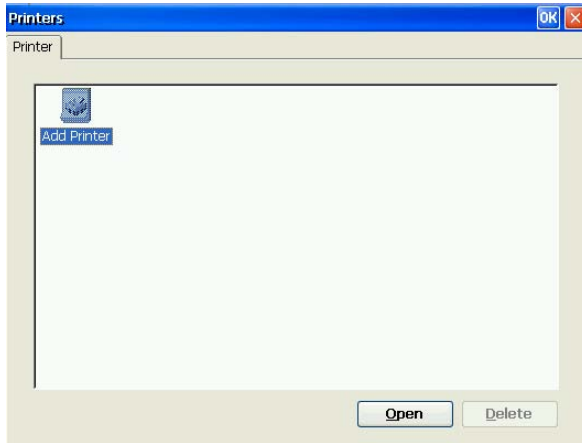
[Connection].....Setup the connection method to the browser.

[Security].....Setup the security for the connection to the browser.

[Advanced].....Setup the display method for the browser.



## Printers



### **NOTE**

- The eClient SC1 supports an LPTx port and a COM1 port.
- Use a RDP protocol to set the printer's adjustment.
- If you are using the ICA protocol, please refer to the instruction manual of the Citrix MetaFrame.

### **Adding another printer settings**

Select [Add Printer] icon, and click [Open]. “Printer Properties” dialog box is displayed. Setup as following the wizard (See page 23 for the details).

### **Deleting a printer settings**

Select the printer icon, and click [Delete].

### **Modifying the settings**

Select the printer icon, and click [Properties]. [Printer Properties] dialog box is displayed, change the settings as needed.



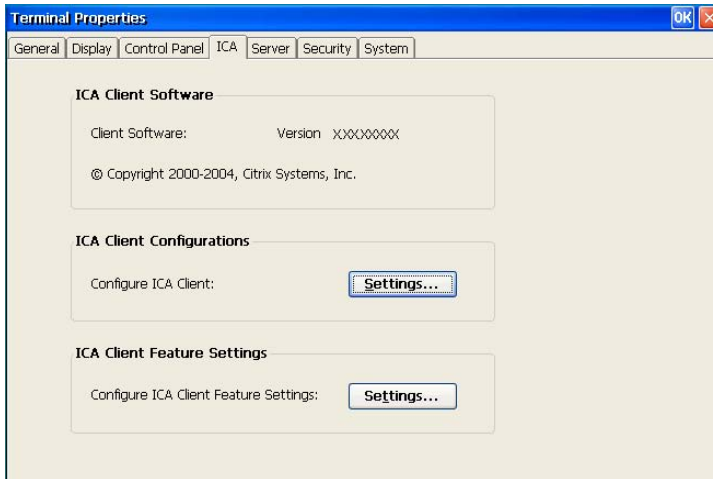
## Network and Dial-up Connections



Set up connection information according to the connection method to WTS/Web server (See page 18 for the details).

---

## 6-6. ICA Settings (ICA Protocol only)



### **NOTE**

- The settings will affect all the settings with ICA protocol.

### **ICA Client information**

[ICA Client Software] .....Version of the Citrix ICA Client

### **ICA Client Configurations**

[ICA Client Configurations]  
.....You can set the configuration for the ICA Connection.

### **ICA Client Feature Settings**

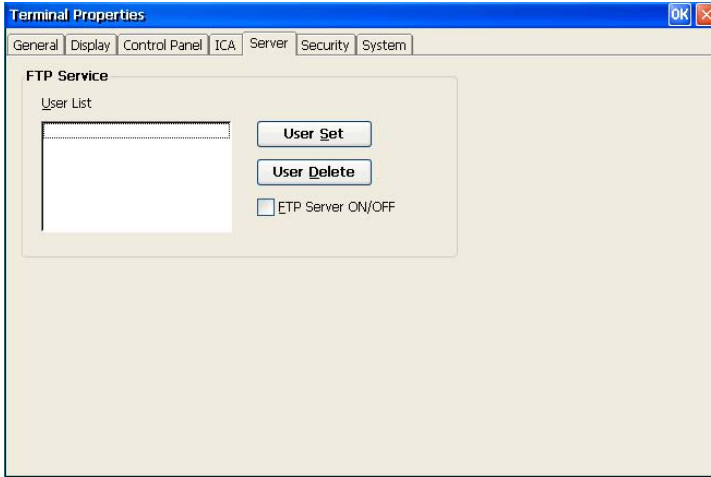
[Configure ICA Client Feature Settings]  
.....You can configure ICA Client Feature Settings.

### **NOTE**

- Do not select the [Client smartcard reader redirection] check box in the [Enable ICA Client Features]. This setting may not function properly.

---

## 6-7. Server



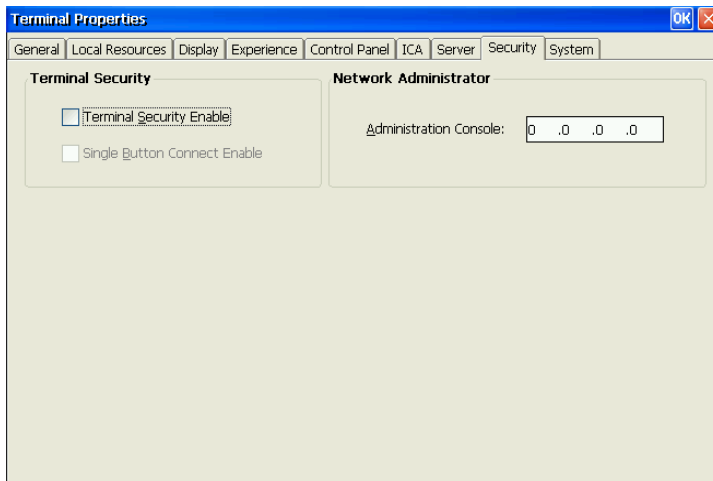
### FTP Service

**NOTE**

- Before setting the FTP service, specify the [Password] in the [Control Panel] tab surely.

[FTP Service].....If using this eClient as a FTP server, select the FTP Server ON/OFF check box and set the user name, which is used for accessing the product from the other eClient, in the user list.

## 6-8. Security



### Security Settings

[Terminal Security Enable]

..... This enables settings on network information of the WTS invisible to prevent from undesirable change.

- **Security items**

Dialog box	Tab
Terminal Connection Manager	[Configure]
Terminal Properties	“Terminal Name” and “Reset” in the [General], [Control Panel (except Mouse and Keyboard)], [ICA], [Server], [Security], “Update” in the [System]

### Canceling Settings

- (1) Display “Terminal Connection Manager”.
- (2) Press [Shift] and [F2] keys at the same time.
- (3) “Enter Security Password” dialog box is displayed. Enter the password set in the [Password] of the [Control Panel].
- (4) All settings in the “Terminal Properties” will be active, remove the Terminal Security Enable check mark on [Security] tab.

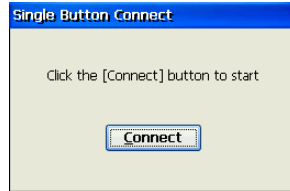


---

[Single Button Connect Enable]

.....(Select the [Terminal Security Enable] check box to enable this check box.)

The procedure to connect to the WTS can be restricted. When this check box is selected, the “Single Button Connect” dialog box is displayed when the eClient SC1 starts up.



Clicking [Connect] in the “Single Button Connect” dialog box, the selected connection in the [Startup...] (see page 28) of “Terminal Connection Manager” starts up. (“Terminal Connection Manager” is not displayed.)

### Canceling Settings

- (1) Display the “Single Button Connect” dialog box.
- (2) Press [Alt] and [F4] keys at the same time.
- (3) “Enter Security Password” dialog box is displayed. Enter the password set in the [Password] of the [Control Panel].
- (4) “Terminal Connection Manager” is displayed.

#### **NOTE**

- Terminal Security cannot be canceled by this setting.

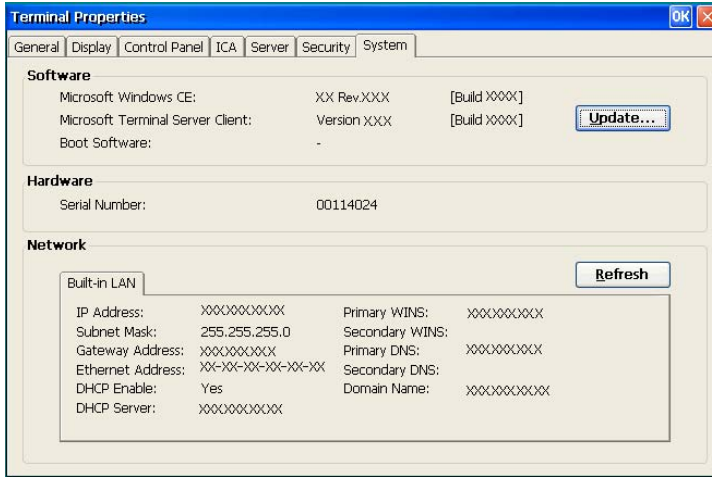
## Administration Console

[Administration Console]

.....Assign an IP address of a computer with the Network Administrator. Other computers with the Network Administrator will not be able to control the eClient SC1 after setting the administration console.

---

# 6-9. System



## Product Information

- [Software] .....Microsoft Windows CE Version, Revision  
Window Terminal Server Client Revision  
(Please refer to the page 51 on [Update...].)
- [Hardware] .....Serial Number of the unit
- [Network] .....Network information

---

# 7. SOFTWARE UPDATING/INSTALLATION

You can update the built-in/add-on software and install new add-on software. Updating/Installation is performed in the “Terminal Properties”.

## (Built-in Software)

OS: Microsoft Windows CE.NET

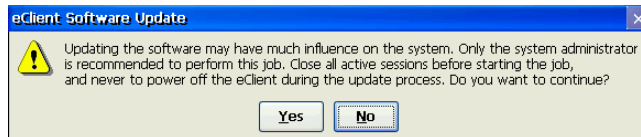
Applications: Microsoft Terminal Server Client (Microsoft RDP Client) / Citrix ICA Client

### **NOTE**

- Before updating, please complete the following:
  - Copy the update/install file to the accessible file folder of the FTP Server.
  - If the WTS is connected with LAN, close all the connection to the WTS.
  - Make a dial-up connection if it is adopted to connect the WTS. Software Updating is not available if a dial-in is adopted to connect the WTS.
- When two or more SC1 exists on the same network, the firmware file (OS file only) can be updated by making any SC1 as a FTP server (see page 54 for the details).

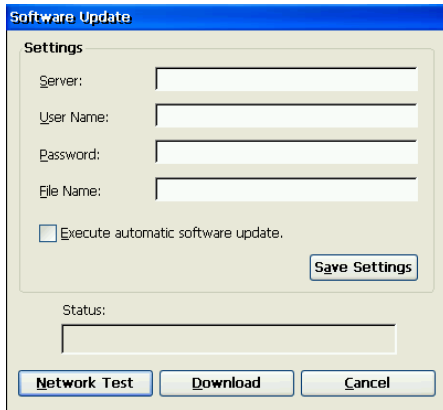
## 1. Click the [Update...] of [System] tab.

The warning message appears, then confirm the message and click [Yes] to continue.



---

## 2. “Software Update” dialog box is displayed.



[Server:] .....Type IP address or full domain name of the FTP Server.

[User Name:]/[Password:] ...Type the user name and password to connect the FTP.

[File Name:] .....Type the folder and copied file name located in the FTP Server.

[Example]

Type the folder and file name as indicated below if the file is in the “update folder” in the “software folder”  
\\software\update\\*.bin

### **NOTE**

- Selecting the “Execute automatic software update.” check box will automatically consult the update file in the location indicated in the “Software Update” dialog box each time turning on the unit. If the update file consulted is newer, the software will be updated automatically while displaying the following dialog box. (This function is not available for a modem connection. Please do not click the check box.)

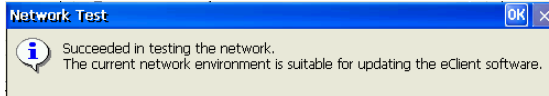
When updating the software, please set the following;

- \* Keep the keyboard and the mouse connected. (Operate with the keyboard and the mouse if failed to update.)
- \* Click [Save Settings] to save settings.
- Click [Save Settings] if using the same settings for the next update.

---

### 3. Preventing from update failure, check if the settings are correct and the network environment is suitable. Click [Network Test].

If the settings are correct, the following message is displayed.

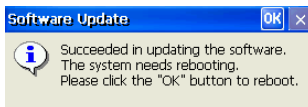


Click [OK].

### 4. Click [Download].

- **In case of updating the built-in software**

The following message is displayed when you successfully download the software.



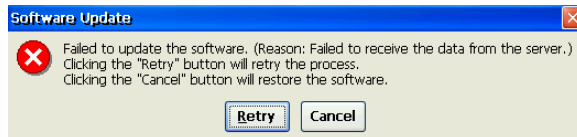
Click [OK] and restart the eClient SC1.

- **In case of installing or updating the Add-on software**

The eClient restarts automatically when you successfully download the software.

#### **NOTE**

- Failing to download results in program's returning to the "Software Update" dialog box.



- In case of returning to the "Software Update" dialog box, confirm such as network settings and redo the [Settings] before clicking [Download].
- In case of retry dialog box is displayed, confirm connection or network settings by following the message, and click [Retry]. If the setting still fails, click [Cancel] to automatically restore the original software and restart the unit. After the unit restarts and resets the update settings. Set the "Software Update" settings once again and download the software from the FTP Server. Do not turn off the unit when this dialog box is displayed until all the process is completed. The eClient SC1 will not restart correctly.

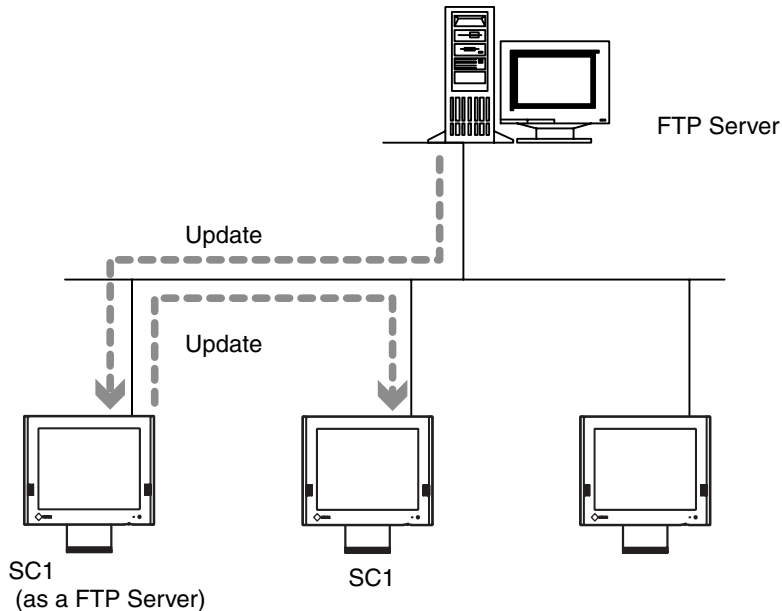
---

## Using the SC1 as a FTP server

The firmware file can be updated by the SC1 set as a FTP server when two or more SC1 exists on the same network

### NOTE

- This updating is available for OS file (NK.bin) only.



### 1. Update a SC1 firmware.

Refer to the previous section for the updating procedure.

### 2. Set the FTP Server setting of the SC1 updated on Step 1.

(Refer to page 47 for the FTP service settings.)

### 3. Update the other SC1.

Specify the SC1 for FTP server in the [Settings] (Refer to below).

[Server:] .....Type IP address or full domain name of the SC1.

[User Name:]/[Password:] ...Type the user name and password to connect the FTP.

[File Name:] .....Type the NK.bin

---

# 8. PRACTICAL SETUP

## 8-1. SC1 settings

By utilizing the DHCP Option function of the DHCP Server, necessary information are supplied by the DHCP Server, and each setting is automatically set every time the SC1 is turned on.

The following information can be obtained by the eClient SC1.

- WTS/Web Server Connection Settings
- Automatic Software Update
- Security Settings
- Administration Console Setting

### **NOTE**

- For DHCP Option settings, confirm the following:
  - The eClient SC1 is connected to the WTS/Web server through built-in LAN or connection with a LAN card
  - A DHCP Server is used for obtaining the IP address.
- If you need to change the following settings from the defaults, please change them before using the DHCP option function.

### **DHCP Server Settings**

Please open DHCP settings to configure each DHCP Option as follows.

Items	Contents
Key	Set the value as "EIZO". (The eClient SC1 will not accept any value but "EIZO".)
Server	Type an IP address of the Server installing an update file and a registry file of the eClient SC1.
User Name / Password	Type the user name to logon to the FTP Server. Type the password for the user name.
Automatic Update	Enable/disable an automatic connection.
File Name	Type the file name to update the software of the eClient SC1.
Automatic Connection	Make a Registry File to connect to a WTS / Web server (Refer to the NOTE below for the settings).
Security Setting	Enable/disable the security settings.
Administration Console	Type the IP address of the Server where Network Administrator (Thinclient utility software) is installed.

## NOTE

- Making a Registry File to Connect to a WTS/Web Server.
- Please refer to the example below, make a registry file, and save it in Unicode format. Please change the italic bold phrases as necessary.
  - **ConnectionName**: Type the connection name in the "Terminal Connection Manager".
  - **TerminalServerAddress**: Type the IP address or the full domain name of the WTS.
  - **URL**: Type the URL of the Web Server. (Including "http://".)

```
[HKEY_LOCAL_MACHINE\SOFTWARE\Microsoft\WBT] .....
"SetupWizardEnabled"=dword:0 .....
                                                                    Specifies whether starting up
                                                                    "eClient Setup Wizard" or not. (Fixed
                                                                    to "0")

(for RDP Connection)
[HKEY_LOCAL_MACHINE\SOFTWARE\Microsoft\WBT\Clients\Registration\RDP\Connections\
ConnectionName]
"DeleteCmdLineArgs"="/d ConnectionName" .....
                                                                    Command argument to delete connection
                                                                    information
                                                                    Fixed - command (an executable file)
                                                                    to delete connection information.
"DeleteExe"="TSConMan" .....
                                                                    Command argument to change connection
                                                                    information.
"PropertiesCmdLineArgs"="/e ConnectionName" .....
                                                                    Fixed - Command (executable file) to
                                                                    change connection information
"PropertiesExe"="TSConMan" .....
                                                                    Command argument to connect to a WTS
"StartCmdLineArgs"="/IS "ConnectionName" .....
                                                                    Fixed - Command (executable file) to
                                                                    connect to a WTS
"StartExe"="cetsc.exe" .....
                                                                    Name displayed on the Connection
                                                                    Manager
"Description"="ConnectionName" .....
                                                                    ClientConnectionName
[HKEY_CURRENT_USER\Software\Microsoft\Terminal Server ClientConnectionName]
"Full Address"="TerminalServerAddress" .....
                                                                    IP address or full domain name of the
                                                                    WTS

(for ICA Connection)
[HKEY_LOCAL_MACHINE\SOFTWARE\Microsoft\WBT\Clients\Registration\ICA\Global\WFCClient]
"Version"="2" .....
                                                                    Event for use of ICA protocol. (Fixed
                                                                    to "2")
[HKEY_LOCAL_MACHINE\SOFTWARE\Microsoft\WBT\Clients\Registration\ICA\Connections\
ConnectionName]
"DeleteCmdLineArgs"="/D:ConnectionName" .....
                                                                    Command argument to delete connection
                                                                    information
                                                                    Fixed - command (an executable file)
                                                                    to delete connection information.
"DeleteExe"="CEICAMGR" .....
                                                                    Command argument to change connection
                                                                    information.
"PropertiesCmdLineArgs"="/P:ConnectionName" .....
                                                                    Fixed - Command (executable file) to
                                                                    change connection information
"PropertiesExe"="CEICAMGR" .....
                                                                    Command argument to connect to a WTS
"StartCmdLineArgs"="/L "ConnectionName" .....
                                                                    Fixed - Command (executable file) to
                                                                    connect to a WTS
"StartExe"="WFICACE" .....
                                                                    Fixed - Assign the ratio of the
                                                                    client SCL screen to the displayed
                                                                    Window of the WTS.
"ScreenPercent"="100" .....
                                                                    Name displayed on the Connection
                                                                    Manager
"Description"="ConnectionName" .....
                                                                    IP address or full domain name of the
                                                                    Meta Frame Server
"Address"="TerminalServerAddress" .....

(for Web Connection)
[HKEY_LOCAL_MACHINE\SOFTWARE\Microsoft\WBT]
"SetupWizardEnabled"=dword:0 .....
                                                                    Specifies whether starting up
                                                                    "eClient Setup Wizard" or not. (0;
                                                                    not starting up, 1; starting up)
[HKEY_LOCAL_MACHINE\SOFTWARE\Microsoft\WBT\Clients\Registration\Web\Connections\Web1]
"StartCmdLineArgs"="URL" .....
                                                                    Specifies the URL (including http://)
                                                                    to access.
[HKEY_LOCAL_MACHINE\SOFTWARE\Microsoft\WBT\Shell]
"EnableAutoConnect"=dword:1 .....
                                                                    Specifies whether to enable/disable
                                                                    automatic connection. (0:disable,
                                                                    1;enable)
"ConnectionDefaultKey"="ConnectionName" .....
                                                                    Specify connection information name
                                                                    of the automatic connection.
"ConnectionDefaultType"="RDP" .....
                                                                    Specify the type of the automatic
                                                                    connection. (The type is RDP, ICA,
                                                                    or Web.)

*1 One entry name can be set at the Administration Console function.
```



---

## eClient SC1 Settings

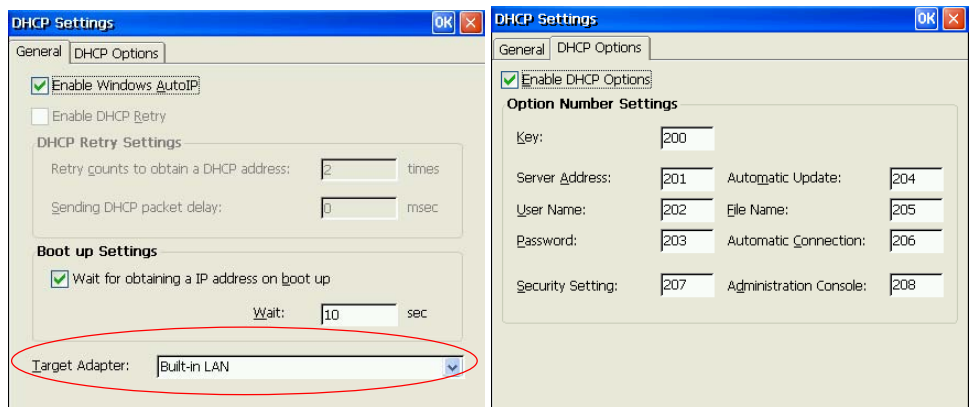
Please confirm the following settings in the [Control Panel] tab of [Terminal Properties].

### [Network and Dial-up Connections] tab

- In case of the connection to the WTS/Web server through built-in LAN
  - IP address setting
    - selecting of [Obtain an IP address via DHCP]
- In case of the connection with a LAN card
  - IP address setting
    - selecting of [Specify an IP address] and typing “255.255.255.255”.

### [DHCP Settings]

- [General] tab
  - : Specifying the [Target Adapter] (Built-in LAN or LAN card) [DHCP Options] tab
- [DHCP Options] tab
  - : Selecting [Enable DHCP Options] and typing each option number settings.



### NOTE

- If the DHCP Option is used to setup the eClient SC1 for the first time, “Terminal Connection Manager” will appear because the unit automatically receives information from the DHCP Server. (“eClient Setup Wizard will not be displayed.)
- If the DHCP Option is set once and needs to be canceled, please change the key of the DHCP Server. Even if changing the DHCP Option in the eClient SC1, the DHCP Server will overwrite the option next time the unit is restarted, and the changes in the eClient SC1 will not be effective.

---

## 8-2. Short cut command by keyboard

Function	Short cut command
Display “Terminal Connection Manager” dialog box (after WTS / Web connection)	Press [Ctrl] + [Alt] + [End]
Display “Terminal Properties” dialog box	Press [F2] in the “Terminal Connection Manager” dialog box.
Canceling the security settings	Press [Shift] + [F2] in the “Terminal Connection Manager” dialog box.
Switching the Active Session of the WTS for the multi session	Press [Ctrl] + [Alt] + [↑] / [↓]

---

# 9. TROUBLESHOOTING

This page presents problem that can be corrected by the user. If a problem persists even after applying the suggested remedies, contact an EIZO dealer.

Problems	Points to check with possible solutions
<b>1. No picture is displayed on the screen.</b>	<ul style="list-style-type: none"><li><input type="checkbox"/> Check if the power is OFF.</li><li><input type="checkbox"/> Check brightness setting. Minimum settings will cause screen to be blank.</li><li><input type="checkbox"/> Try pressing a key on the keyboard, or clicking the mouse. (The monitor may be in a power saving mode.)</li></ul>
<b>2. The following messages appear on screen after the power is on: (The operation automatically starts up after the message disappears.)</b> <ul style="list-style-type: none"><li>• “WARNING No Keyboard Connected!!”</li><li>• “WARNING No Mouse Connected!!”</li></ul>	<ul style="list-style-type: none"><li><input type="checkbox"/> Check if the cable of the keyboard or the mouse is securely connected.</li><li><input type="checkbox"/> Check if the cable of the keyboard or the mouse is connected to the proper connector.</li><li><input type="checkbox"/> Turn off the power, and turn it on a few seconds later.</li></ul> <p><b>NOTE</b> When using neither a mouse nor a keyboard intentionally, it is made to a setup on which an error is not displayed (See P.39).</p>
<b>3. Input devices (such as a keyboard or a mouse) do not work properly.</b>	<ul style="list-style-type: none"><li><input type="checkbox"/> Check if the cable of the keyboard or the mouse is securely connected.</li><li><input type="checkbox"/> Check if the keyboard or the mouse is connected to the proper connector.</li></ul>
<b>4. The screen is not displayed in a normal color when the SC1 logs on Windows 2000 server with RDP protocol</b>	<ul style="list-style-type: none"><li><input type="checkbox"/> In case of Windows 2000 Server connection, set the 256 colors to the display color when the SC1 logs on the server.</li></ul>

---

# 10. CLEANING

Periodic cleaning is recommended to keep the monitor looking new and to prolong its operation lifetime.

## **NOTE**

- Never use thinner, benzene, alcohol (ethanol, methanol, or isopropyl alcohol), abrasive cleaners, or other strong solvents, as these may cause damage to the cabinet.

## **Cabinet**

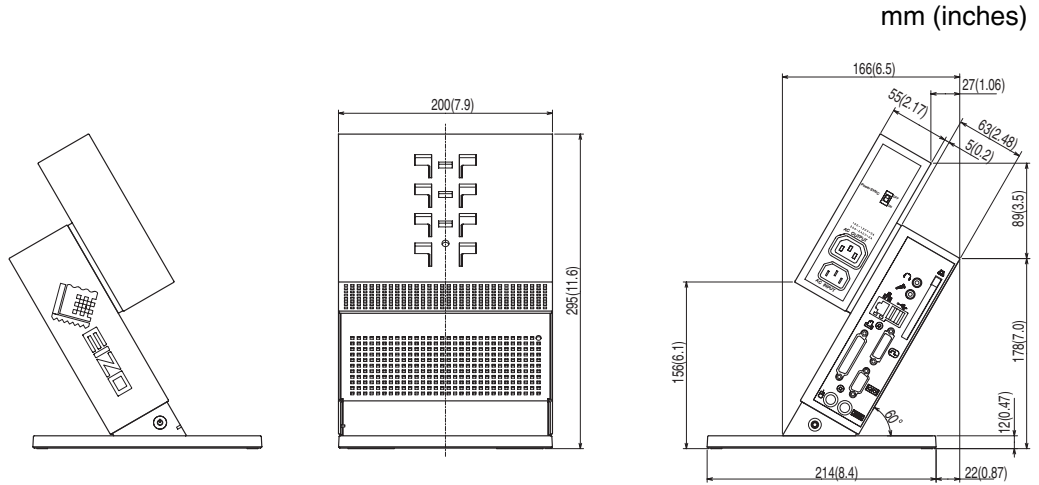
To remove stains, wipe the cabinet with a soft, lightly moistened cloth using a mild detergent. Do not spray wax or cleaner directly onto the cabinet.

# 11. SPECIFICATIONS

CPU and Memory	CPU	VIA Eden, 800 MHz
	Memory	RAM: 128 MB, ROM: 32 MB
Display Color		256 / 65536 / 16 M colors
Supported Resolution		1280 × 1024 (60 Hz) 1024 × 768 (60 Hz) 800 × 600 (60 Hz) 640 × 480 (60 Hz)
Complying Protocol		Microsoft Remote Desktop (RDP) Citrix Independent Computing Architecture (ICA)
Software		Microsoft Windows CE .NET 4.2 Microsoft RDP Client Citrix ICA Client 7.0 or later
Complying Software for Windows Terminal Server		Microsoft Windows 2000 Server / Advanced Server / Datacenter Server Microsoft Windows Server 2003 Standard Edition / Enterprise Edition / Datacenter Edition Citrix MetaFrame 1.8 / 1.8 + FR1 MetaFrame XP / XP + FR1 / XP + FR2 / XP + FR3
USB		USB standard Rev. 1.1 complied
Mouse		PS/2 Optical Mouse
Power Supply		100-120/200-240 VAC ± 10 %, 50/60 Hz, 2.6 A/2.4 A (including Outlet Maximum load capacity 2 A)
Power Consumption (without AC outlet connection)		Min: 20 W (with keyboard, mouse, and LAN) Max: 35 W (with keyboard, mouse, USB, LAN, and PC card) Power off (with keyboard, mouse, and LAN): Less than 3 W
Interface Connector	LAN	10BASE-T/100BASE-TX (RJ-45) Wake On LAN supported × 1
	Keyboard, Mouse	PS/2 (Mini DIN 6 pin) × 2
	USB Port	Downstream × 2
	Parallel	IEEE1284 (D-Sub 25 pin) × 1
	Serial Port	RS-232C (D-Sub 9 pin) × 1
	PC Card Slot	PCMCIA Type II (68 pin) × 1
	Line Output	Stereo mini jack × 1
	Monaural Microphone <sup>1</sup>	Mini jack × 1
	Video	DVI-I × 1 (Analog / Digital)
Dimensions		200 mm (W) × 295 mm (H) × 236 mm (D) (7.8" (W) × 11.6" (H) × 9.3" (D))
Weight		3.4 kg (7.5 lbs.) (With the Monitor Attachment Unit: 3.9 kg (8.6 lbs.))
Environmental Specifications		Temperature      Operating: 5 °C to 35 °C to (41 °F to 95 °F) Storage: -20 °C to 60 °C (-4 °F to 140 °F) Humidity            30 % to 80 % R.H. Non-condensing
100-120 VAC range	TÜV/NRTL, c-TÜV, FCC class A, CB	
200-240 VAC range	CE, CB, TÜV Rheinland/GS	

<sup>1</sup> Monaural microphone connector doesn't support SC1.

## Dimensions (eClient only)



## Dimensions (EIZO monitor attached)

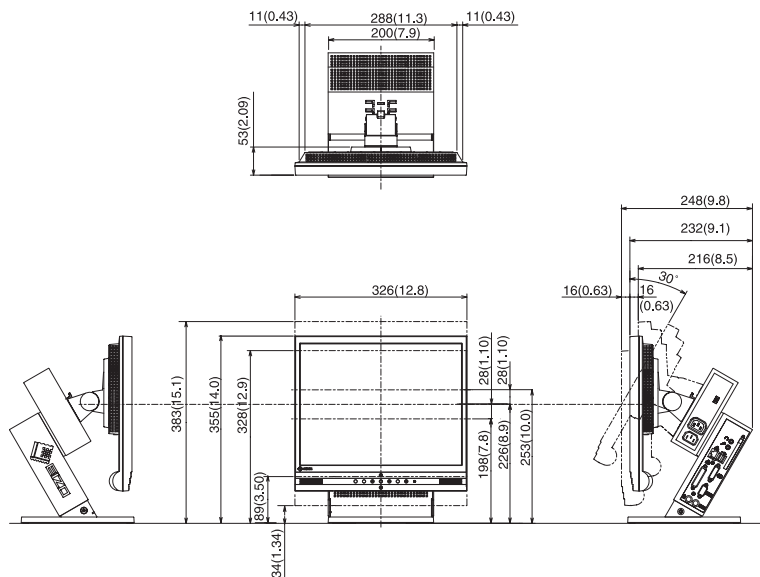
W x H x D(mm)

Model \ Monitor Mount Position	Highest	Middle	Lowest
L367	326 x 383 x 216	326 x 355 x 232	326 x 328 x 248
L557/L567	368 x 437 x 224	368 x 410 x 239	368 x 382 x 255
L767	415 x 453 x 226	415 x 425 x 242	415 x 398 x 258

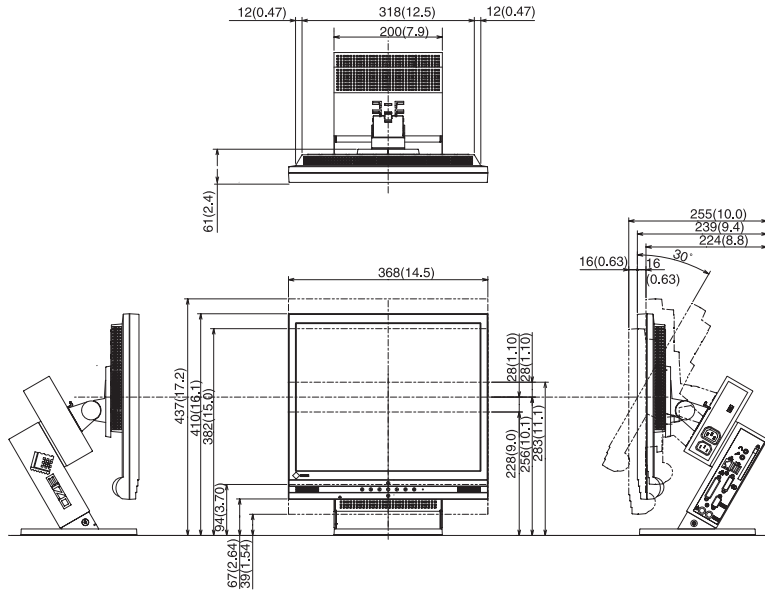
\* The figure is the size in case the monitor is installed perpendicularly.

mm (inches)

### L367



## L557/L567



## L767

