



# User's Manual

# RP-701/RP-901/RP-902/RP-903

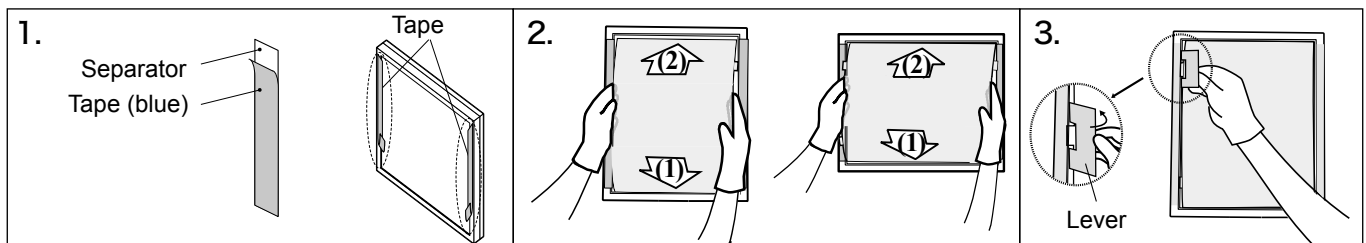
Panel Protector for EIZO 48 cm (19.0 inch) / 54 cm (21.3) inch class LCD Monitors

## Note

- Surface of the panel protector catches the dirt (dust or finger prints) easily. Please use the enclosed gloves while installing and removing the panel protector.
- Please use the supplied masking tape and be careful not to scratch the LCD panel or the cabinet with the panel protector during installation. Also please do not remove the panel protector often. It may scratch or result in damage to the LCD panel.
- When using LCD monitor with optional panel protector, it is preferable to avoid using downwards. In this condition, the panel protector might become bend or slip out from the monitor.
- Attaching a panel protector to the monitor with an Integrated Front Sensor (slide type) disables an Integrated Front Sensor (slide type). The settings for the monitor and RadiCS/RadiCS LE need to be changed. Refer to each User's Manual for details.

## Installation

**Before installation, please remove dust and stains from the LCD panel.**



### 1. Strip the tape from the separator and adhere it on each edge of the cabinet (on the right and left).

With RP-901/RP-903, adhere the tape on long sides of the cabinet; with RP-701/RP-902, adhere the tape on short sides of the cabinet.

### 2. Set the panel protector into the grooves of the panel frame; the lower first (1), then the upper (2).

### 3. With the enclosed tool (Lever) set the tabs of the panel protector into the side grooves (4 tabs / 6 tabs).

Put the lever on the tabs of the panel protector and move it toward the LCD panel to install. Position the protector into the LCD panel tightly without leaving an opening.

### 4. Strip the tape from the cabinet.

## Removing

Put the lever on the tabs of panel protector and move it toward the cabinet to remove.

## Cleaning

### Note

- Please be sure to keep the panel protector immobilized while cleaning it. Otherwise it may scratch the surface of the LCD panel. To hold the panel protector by hand, use gloves or a soft cloth to avoid dust or finger prints.
- Chemicals such as alcohol and antiseptic solution may cause gloss variation, tarnishing, and fading of the cabinet or panel, and also quality deterioration of the image.
- Never use any solvents or chemicals, such as thinner, benzene, wax, and abrasive cleaner, which may damage the cabinet or panel.

**This product comes with a special cleaning cloth designed to remove stains from the panel.**

**If necessary stubborn stains can be removed by moistening part of the cloth with water to enhance its cleaning power.**

### Tips

- It is recommended to use EIZO cleaning kit "ScreenCleaner" (option) to clean the panel.

## Specification

Surface treatment	Anti-Reflective Coating (Both sides)	
Coating strength	RP-701/RP-903: 5H	RP-901/RP-902: 4H
Reflectivity	RP-701/RP-903: Less than 1.0 %	RP-901/RP-902: Less than 0.8 %
Light transmission	RP-701/RP-903: More than 99.0 %	RP-901/RP-902: More than 95.0 %
Dimension/ Weight	RP-701: 379.6 mm (W) × 304.5 mm (H) × 1.0 mm (D) / Approx. 140 g RP-901: 341.5 mm (W) × 425.7 mm (H) × 1.5 mm (D) / Approx. 290 g RP-902: 435.6 mm (W) × 328.0 mm (H) × 1.2 mm (D) / Approx. 210 g RP-903: 329.0 mm (W) × 437.1 mm (H) × 1.2 mm (D) / Approx. 210 g	
Accessories	Lever (for Panel Protector), Gloves, Cleaning Cloth, User's Manual, Masking tape 4 pieces (2 sets)	