

# User's Manual

## EIZO EcoView NET™

### Power Management Software

#### Important

Please read this User's Manual carefully to familiarize yourself with safe and effective usage.

- 
- The latest software and User's Manual are available for download from our web site:

<http://www.eizoglobal.com>

---



# About this Manual

This manual describes the features, installation and use of the EIZO EcoView NET LCD monitor power management software.

---

No part of this manual may be reproduced, stored in a retrieval system, or transmitted, in any form or by any means, electronic, mechanical, or otherwise, without the prior written permission of EIZO Corporation. EIZO Corporation is under no obligation to hold any submitted material or information confidential unless prior arrangements are made pursuant to EIZO Corporation's receipt of said information. Although every effort has been made to ensure that this manual provides up-to-date information, please note that EIZO monitor specifications are subject to change without notice.

---

Windows and Windows Server are registered trademarks of Microsoft Corporation in the United States and other countries.

VESA is a registered trademark or a trademark of Video Electronics Standards Association in the United States and other countries.

EIZO EcoView NET is a trademark of EIZO Corporation.

EIZO, EIZO logo, FlexScan and ScreenManager are registered trademarks of EIZO Corporation in Japan and other countries.

All other trademarks are the properties of their respective owners.

# CONTENTS

<b>About this Manual .....</b>	<b>2</b>	<b>Chapter 5 Troubleshooting.....</b>	<b>33</b>
<b>CONTENTS.....</b>	<b>3</b>	EIZO EcoView NET Server.....	33
<b>Chapter 1 Introduction.....</b>	<b>4</b>	EIZO Ecoview NET Client .....	34
1-1. Features .....	4		
1-2. System Configuration .....	5		
1-3. System Requirements .....	5		
● Server Computer.....	5		
● Client Computer .....	6		
<b>Chapter 2 Setting Up EIZO EcoView NET .....</b>	<b>7</b>		
2-1. Setting Up the Server Computer.....	8		
● Installing EIZO EcoView NET Server.....	8		
● Configuring Network .....	9		
2-2. Setting Up the Client Computer .....	10		
● Installing EIZO EcoView NET Client .....	10		
● Configuring Network .....	10		
2-3. Refreshing Monitor Information.....	11		
2-4. Uninstallation .....	12		
● Uninstalling EIZO EcoView NET Server .....	12		
● Uninstalling EIZO EcoView NET Client.....	13		
<b>Chapter 3 EIZO EcoView NET Server .....</b>	<b>14</b>		
3-1. Startup and Exit .....	14		
● Startup.....	14		
● Exit .....	14		
● Confirm Version Information .....	14		
3-2. Checking Monitor Information .....	15		
● Customizing the Monitor List.....	16		
● Refreshing Information.....	17		
● Searching Monitors .....	18		
● Deleting a monitor from the “Monitor List” .....	19		
● Exporting Monitor Information .....	19		
3-3. Operating Monitors.....	20		
3-4. Registering a Power Schedule .....	21		
3-5. Registering Monitor Management Information .....	25		
3-6. Displaying the Amount of Power Reduction.....	26		
3-7. Operating Client Computers.....	28		
<b>Chapter 4 EIZO EcoView NET Client.....</b>	<b>29</b>		
4-1. Startup and Exit .....	29		
● Startup.....	29		
● Exit .....	29		
● Confirm Version Information .....	29		
4-2. Setup Dialog Box .....	30		
4-3. Registering a Power Schedule .....	31		

# Chapter 1 Introduction

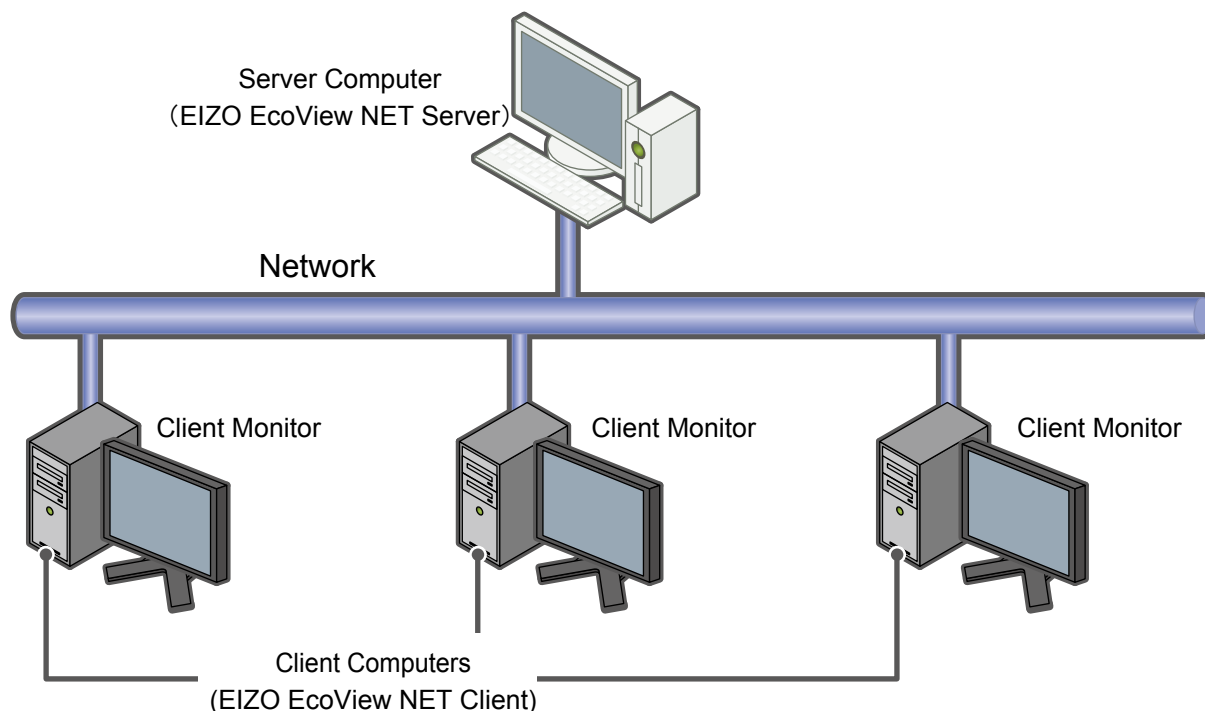
EIZO EcoView NET is a software that enables you to centrally operate and manage the power and screen brightness of monitors connected to client computers on the network ("client monitors") from a single server computer.

## 1-1. Features

- **Monitor Remote Management<sup>\*1</sup>**  
Centrally operates and manages the power, Auto EcoView features, brightness and Locking Buttons of up to 8,000 monitors.  
Available to register the monitor installing location and its ID number respectively.  
Output monitor information to a file as a list in CSV format.  
<sup>\*1</sup> The power consumption of the client monitor at the power on/off and in the sleep mode is different from the descriptions in the user's manual of the monitor for realizing the availability of the remote management function.
- **Power ON/OFF schedule**  
Turns the monitor power on and off at specified time and day.
- **Power ON setting<sup>\*2</sup>**  
Turn the monitor power back on when the mouse is operated.  
<sup>\*2</sup> This is a function in EIZO EcoView NET Client (client software).
- **Power reduction display**  
Displays a percentage of the power reduction effect achieved for each monitor when using this software and the power management functions.  
Outputs the list of power reduction for each monitor to the file in CSV format.
- **Computer Remote Management**  
Centrally operates and manages the supply of power to computers.

## 1-2. System Configuration

EIZO EcoView NET consists of two software: [EIZO EcoView NET Server] and [EIZO EcoView NET Client]. The system configuration is as follows.



Server Computer	The [EIZO EcoView NET Server] software is installed. Manages and operates the client monitors.
Client Computer	The [EIZO EcoView NET Client] software is installed. Controls their monitors via commands from the server computer (up to 1,000 client computers can be connected).
Client Monitor	Managed monitor (up to 8,000 monitors can be managed).

### Note

- EIZO EcoView NET Server and EIZO EcoView NET Client cannot be installed and used on the same computer. If both are installed, the error message "The port number you set is already in use. Check the port number." will appear when you log on.

## 1-3. System Requirements

Below are the system requirements for using EIZO EcoView NET.

### ● Server Computer

- OS:
  - Microsoft Windows 10 (32 bit and 64 bit)
  - Microsoft Windows 8.1 (32 bit and 64 bit)
  - Microsoft Windows 8 (32 bit and 64 bit)
  - Microsoft Windows 7 Service Pack 1 (32 bit and 64 bit)
- Software:
  - Windows 10: Microsoft .NET Framework 4.6
  - Other operating systems: Microsoft .NET Framework 4.5.2

---

**Note**

- We recommend configuring a static IP address.
  - Note that some function is unavailable on computers equipped with a wired LAN adapter that does not support WOL (Wake On Lan).
- 

## ● Client Computer

- OS:
    - Microsoft Windows 10 (32 bit and 64 bit)
    - Microsoft Windows 8.1 (32 bit and 64 bit)
    - Microsoft Windows 8 (32 bit and 64 bit)
    - Microsoft Windows 7 (32 bit and 64 bit)
  - Software:
    - Windows 10: Microsoft .NET Framework 4.6
    - Other operating systems: Microsoft .NET Framework 4.5.2
  - Supported Monitors (Client Monitors):
    - EIZO FlexScan EV series monitor that supports monitor adjustment via USB
- 

**Tips**

- Even if a monitor does not meet the requirements above, as long as it conforms to the power management standards for monitors (VESA DPM, DVI DMPM), power control operations can be performed.
  - If a monitor is equipped with multiple input systems, it will operate correctly when it is set for manual signal selection between the systems.
  - The FlexScan EV series monitor will operate correctly if the monitor's power saving setting is set to On.
- 

---

**Note**

- The following software cannot be used with EIZO EcoView NET Client at the same time. If you install EIZO EcoView NET Client, the software will be automatically uninstalled.
    - ScreenManager Pro for LCD
    - ScreenManager Pro for LCD (DDC/CI)
    - ScreenManager Pro for Medical
    - ScreenManager Pro for Gaming
    - G-Ignition
  - Note that some function is unavailable on computers equipped with a wired LAN adapter that does not support WOL (Wake On Lan).
  - This software can only be used when the server computer and client computers are in the same domain environment.
-

# Chapter 2 Setting Up EIZO EcoView NET

The EIZO EcoView NET setup sequence is described below.

## "2-1. Setting Up the Server Computer" (page 8)

- Installing EIZO EcoView NET Server
- Configuring Network



## "2-2. Setting Up the Client Computer" (page 10)

- Installing EIZO EcoView NET Client
- Configuring Network



## "2-3. Refreshing Monitor Information" (page 11)

### Note

- The user account to be used for installing EIZO EcoView NET Server and EIZO EcoView NET Client must have the "Administrators" privilege.
- For user account privilege settings, contact your system administrator.
- Install equivalent versions of EIZO EcoView NET Server and EIZO EcoView NET Client. The software may not operate correctly if different versions are used.

## 2-1. Setting Up the Server Computer

### ● Installing EIZO EcoView NET Server

#### 1. Open the Launcher.exe by double-clicking

The start menu opens.

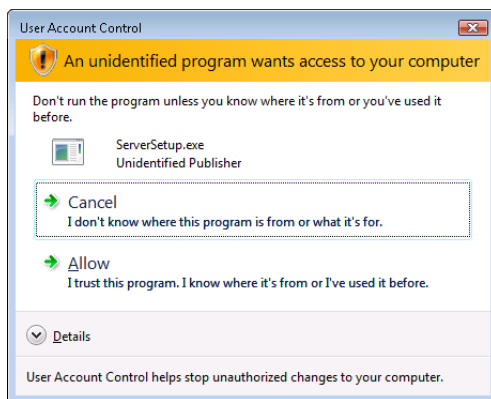
#### 2. Click [EIZO EcoView NET Server]

#### 3. Click [Install]

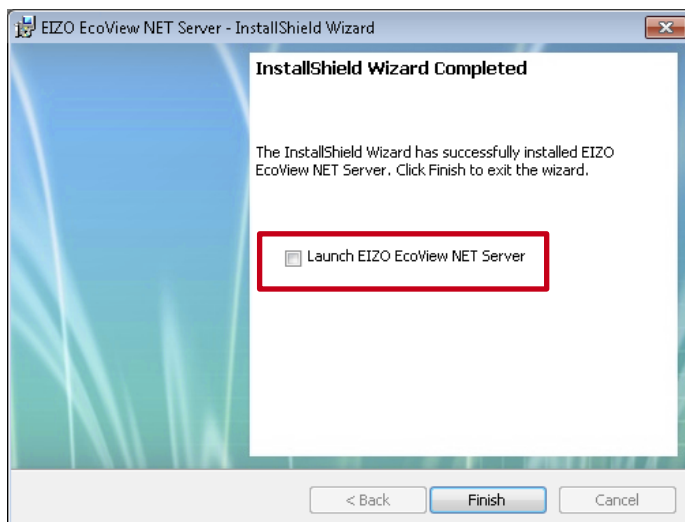
The installer starts. Follow the on-screen instructions to install the software.

##### Tips

- If your OS is Windows Vista, the “User Account Control” dialog box may appear. Click [Allow] to open the menu.



After the installation completes, the following screen appears. Click the “Launch EIZO EcoView NET Server” checkbox when performing the network setting continuously.



When EIZO EcoView NET Server starts, the icon appears in the notification area.



EIZO EcoView NET Server icon



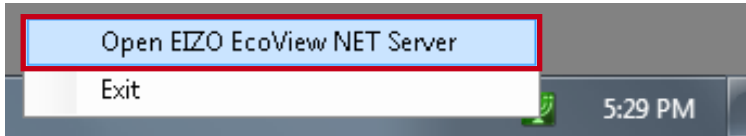
## ● Configuring Network

### 1. Open the EIZO EcoView NET Server main window

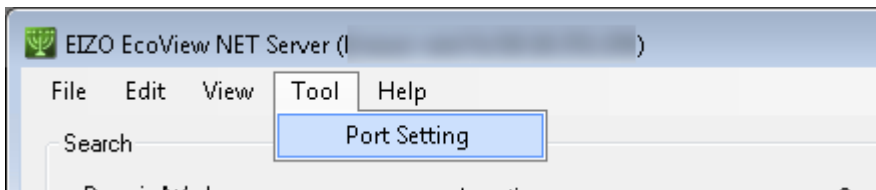
#### Tips

- If the EIZO EcoView NET Server is not started yet, select [Start] - [(All) Programs] - [EIZO] - [EIZO EcoView NET Server] - [EIZO EcoView NET Server] to start it.

Then double click the EIZO EcoView NET Server icon in the notification area, or select “Open EIZO EcoView NET Server” by right-clicking the icon.

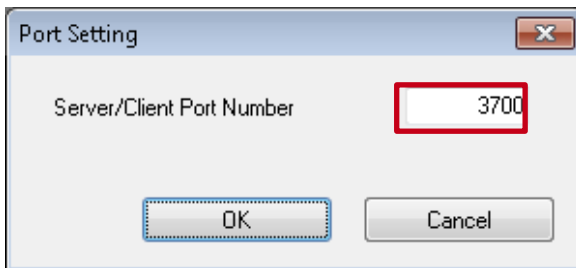


### 2. In the EIZO EcoView NET Server main window, from the menu bar, select [Tool] - [Port Setting]



The “Port Setting” dialog box appears.

### 3. Configure the Server/Client port number



#### Tips

- When setting up a client computer (see “2-2. Setting Up the Client Computer” (page 10)), you must specify the port number you specified here.  
We recommend writing down this number as necessary.

### 4. Click [OK]

The port settings are enabled.

Continuously, set up the client computers.

## 2-2. Setting Up the Client Computer

Set up EIZO EcoView NET Client on all computers to which monitors to be managed are connected.

### ● Installing EIZO EcoView NET Client

#### 1. Installing ScreenManager Pro

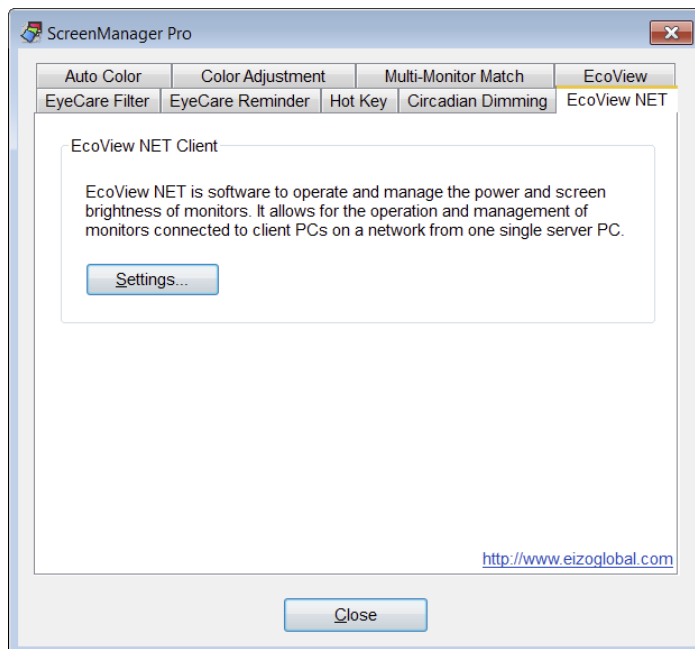
When you install ScreenManager Pro, EIZO EcoView NET Client will be installed at the same time.  
For details on how to install the software, refer to the ScreenManager Pro User's Manual.

### ● Configuring Network

#### 1. Double-click the ScreenManager Pro icon in the notification area

The ScreenManager Pro setting window appears.

#### 2. In the [EcoView NET] tab, click “Settings”



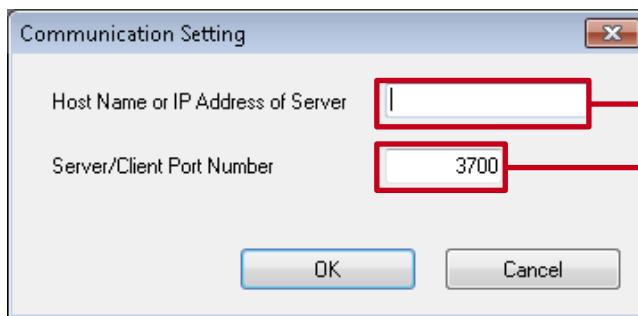
“EIZO EcoView NET Client” appears.

#### 3. Click [Communication Setting]



The “Communication Setting” dialog box appears.

#### 4. Set the host name or IP address of the server computer, and the port number of the server computer/client computer



Enter the host name or IP address of the server computer that you configured in “2-1. Setting Up the Server Computer” (page 8).  
Enter the Server/Client port number  
Enter the same port number as the one you entered on the server computer in “Configuring Network” (page 9).

#### 5. Click [OK]

The communication settings are enabled. After you have finished setting up all the client computers, go on to “2-3. Refreshing Monitor Information” (page 11).

### 2-3. Refreshing Monitor Information

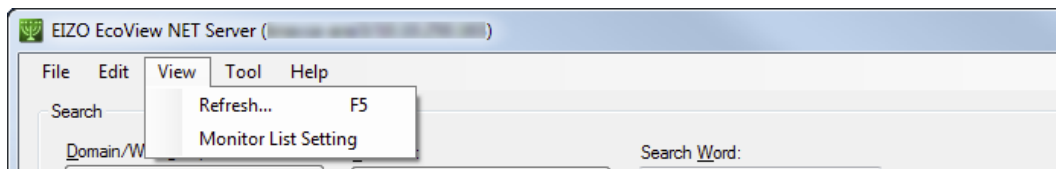
Refresh the client monitor information displayed on the server computer (in EIZO EcoView NET Server).

#### 1. Open the EIZO EcoView NET Server main window

Proceed the step 2 if the main window is displayed.

If not, double click EIZO EcoView NET Server icon in the notification area, or select “Open EIZO EcoView NET Server” by right-clicking the icon.

#### 2. In the EIZO EcoView NET Server main window, from the menu bar, select [View]-[Refresh]



##### Tips

- This action may take a few minutes, depending on the number of connected client computers.

This completes the setup of EIZO EcoView NET.

## 2-4. Uninstallation

---

Uninstall EIZO EcoView NET Server from the server computer and EIZO EcoView NET Client from the various client computers.

### ● Uninstalling EIZO EcoView NET Server

#### Note


- To uninstall EIZO EcoView NET Server, log in to Windows with a user account that has administrator privileges.

#### Windows 10

1. Select [Start] - [Settings] - [System] - [Apps and Features]
2. From the list, select “EIZO EcoView NET Server”, and click [Uninstall]

Follow the on-screen instructions to uninstall the software.

#### Windows 8.1

1. Click  at the bottom of the “Start” screen  
The “Apps” screen appears.
2. Select [Windows System] - [Control Panel] - [Programs] - [Uninstall a program]
3. From the list, select “EIZO EcoView NET Server”, and click [Uninstall]

Follow the on-screen instructions to uninstall the software.

#### Windows 8

1. Right-click on the “Start” screen at a position where there are no tiles
2. Select [All apps] - [Windows System] - [Control Panel] - [Programs] - [Uninstall a program]
3. From the list, select “EIZO EcoView NET Server”, and click [Uninstall]

Follow the on-screen instructions to uninstall the software.

#### Windows 7

1. Select [Start] - [Control Panel] - [Programs] - [Uninstall a program]
2. From the list, select “EIZO EcoView NET Server”, and click [Uninstall]

Follow the on-screen instructions to uninstall the software.

## ● Uninstalling EIZO EcoView NET Client

### 1. Uninstall ScreenManager Pro

When you uninstall ScreenManager Pro, EIZO EcoView NET Client will be uninstalled at the same time. For details on how to uninstall the software, refer to the ScreenManager Pro User's Manual.

## Chapter 3 EIZO EcoView NET Server

EIZO EcoView NET Server is a system-resident software to operate and control all client monitors with non-piped mode operation from the server computer.

### 3-1. Startup and Exit

#### ● Startup

The software starts automatically after the system startup. When opening the main window, double click EIZO EcoView NET Server icon in the notification area, or select “Open EIZO EcoView NET Server” by right-clicking the icon.

#### ● Exit

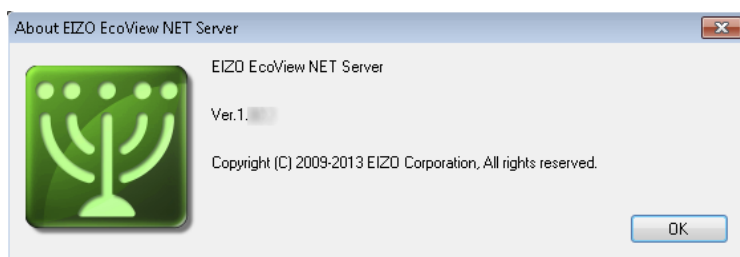
Select “EXIT” by right-clicking the EIZO EcoView NET Server icon in the notification area.

##### Note

- Usually, it is not required to exit the EIZO EcoView NET Server.
- When exiting the EIZO EcoView NET Server, the server computer cannot communicate with the EIZO EcoView NET Client.

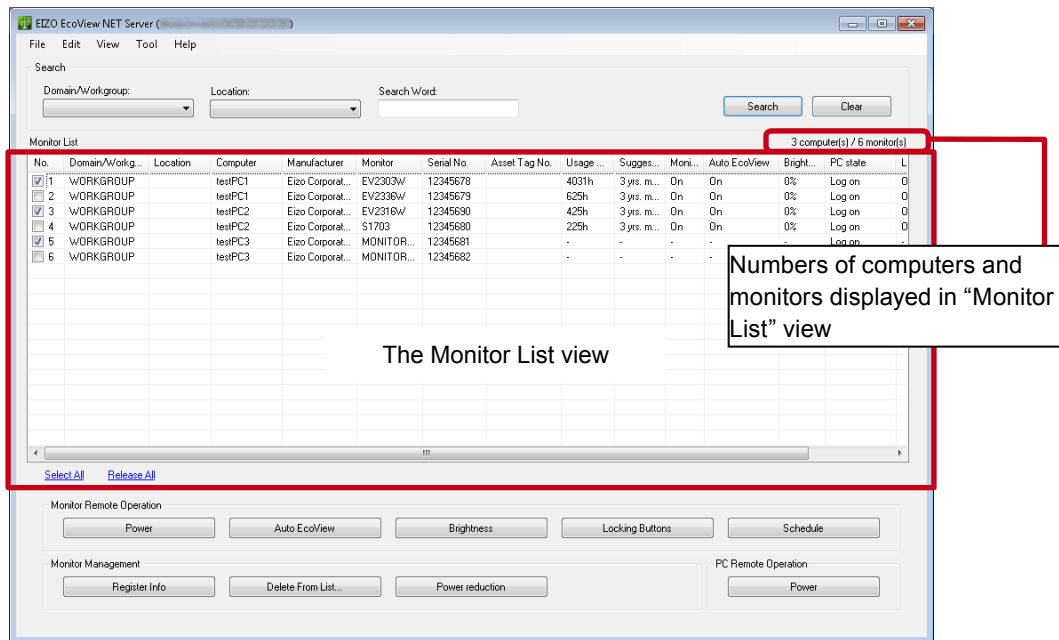
#### ● Confirm Version Information

From the menu bar, select [Help] - [About EIZO EcoView NET Server].



## 3-2. Checking Monitor Information

When you start the software, the EIZO EcoView NET Server main window appears, and a list of client monitor information appears in the “Monitor List” view.



The Monitor List view

### Tips

- The display may take a few minutes, depending on the number of connected client computers.

## ● Customizing the Monitor List

The items for display in the “Monitor List” can be selected.

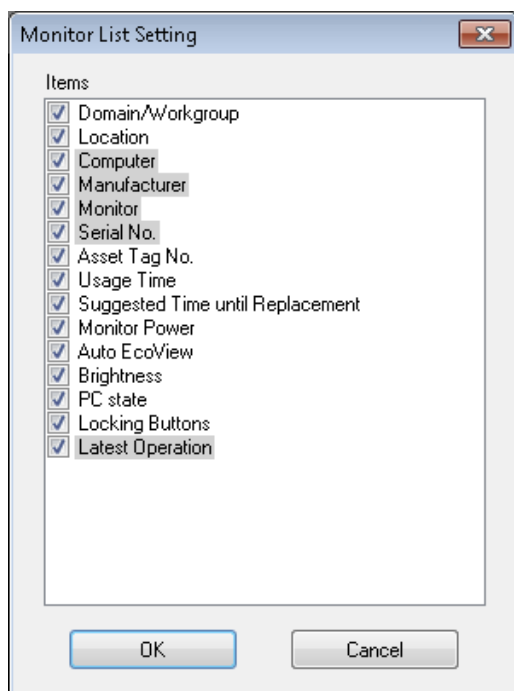
### Note

- The columns “No.”, “Computer”, “Manufacturer”, “Monitor”, “Serial No.”, and “Last Operation” cannot be hidden from the list.

### 1. From the menu bar, select [Show] - [Monitor List Setting]

The “Monitor List Setting” dialog box appears.

### 2. Select the checkboxes corresponding to the items for display



## Monitor Information

Item	Detail
Domain/Workgroup	The domain/workgroup to which the client computer belongs
Location	The location where the client monitor is installed (This can be set to a user-determined value.)
Computer	The PC name of the client computer
Monitor	The product name of the client monitor
Serial No.	The serial number of the client monitor
Manufacturer	The name of the manufacturer of the client monitor
Asset Tag No.	The asset tag number of the client monitor (This can be set to a user-determined value.)
Usage Time <sup>*1</sup>	The length of time that the client monitor has been in use
Suggested Time until Replacement <sup>*1</sup>	The approximate period until the usage time of the client monitor reaches 30,000 hours.
Monitor Power <sup>*1</sup>	The power status of the client monitor
Auto EcoView <sup>*1</sup>	The setting value of the client monitor's Auto EcoView function
Brightness <sup>*1</sup>	The setting value of the client monitor's brightness
PC state	The power status of the client computer
Locking Buttons <sup>*1</sup>	The status whether the operation button lock of a client monitor is enabled or disabled



Item	Detail
Last Operation	The last operation to be executed by the server computer on the client monitor and the results of that operation

\*1 Appears only on monitors that support monitor adjustment via USB.

### 3. Click [OK]

#### Tips

- By clicking on a title in the “Monitor List”, you can sort the monitor information by the content of that column.

### About “Suggested Time until Replacement”

“Suggested Time until Replacement” displays an estimate of the approximate expected usage time remaining for the monitor.

#### \*Calculation method for time

Assuming the monitor is used for one year equals 12 months, one month equals 30 days, and one day equals 12 hours, a total usage time of up to 30,000 hours can be calculated.

#### Note

- “Suggested Time until Replacement” is not intended to guarantee the quality of the monitor for the displayed period.
- Regardless of the figure shown by “Suggested Time until Replacement”, if any abnormality is noticed in the display of a monitor, consult your local EIZO representative.
- When 30,000 hours has been exceeded, “Expired” is displayed. However, if there is no problem with the display quality, continue using the monitor in its current condition.
- For details of the warranty period for the monitor, please refer to the monitor warranty document or user’s manual.

### ● Refreshing Information

To refresh the information in the “Monitor List” view, from the menu bar, select [View] - [Refresh].

#### Tips

- This action may take a few minutes, depending on the number of client computers that are connected.

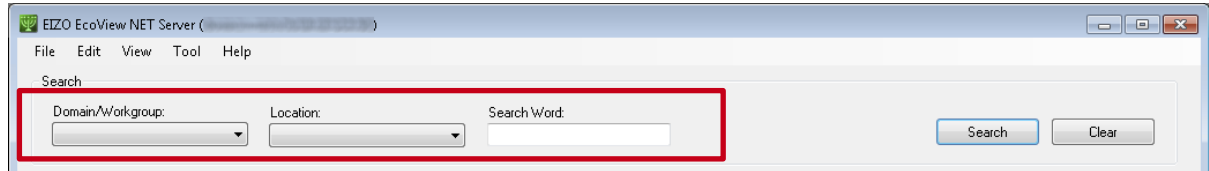
## ● Searching Monitors

Search all monitors in the “Monitor List” meeting your specified condition.

### Executing Search Operation

Enter one or more search conditions in the “Search” box, then click [Search].

Monitors meeting all your search condition appear in the “Monitor List” view.



#### Note

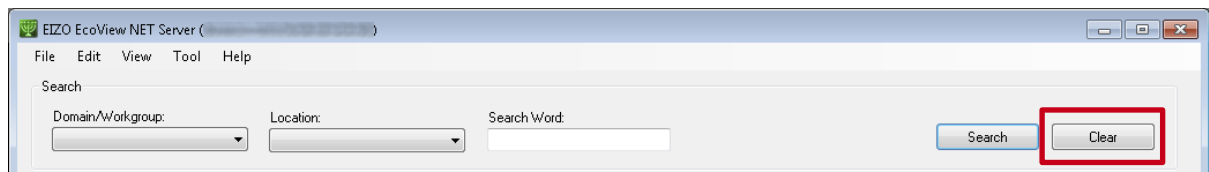
- Items configured to be hidden as described in “[Customizing the Monitor List](#)” (page 16) are excluded from searches.
- Note that the items “Domain/Workgroup” and “Location” are always included in searches regardless of their display setting.

#### Tips

- When you enter arbitrary search terms, a search is performed on all terms except “No.”, “Usage Time”, “Monitor Power”, “Auto EcoView”, “Brightness”, “PC state” and “Locking Buttons”.

### Clearing Search Condition

Click [Clear] to clear the search condition.



The search condition are deleted, and all monitor information appears in the list view again.

## ● Deleting a monitor from the “Monitor List”

Delete a monitor not to be managed from the list.

### 1. Uninstall EIZO EcoView NET Client from the client computer to which the monitor you wish to delete is connected

Alternatively, disconnect the monitor for deletion from the client computer

See “2-4. Uninstallation” (page 12) for details about uninstallation.

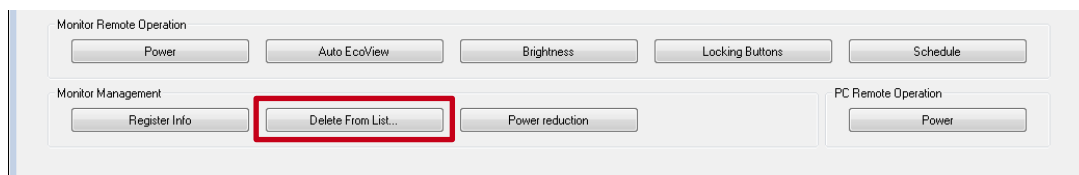
### 2. From the server computer, start EIZO EcoView NET Server

### 3. Select the client monitor you wish to remove from the “Monitor List” view

Select the checkbox in the “No.” column of the list view.

No.	Domain/Workg...	Location	Computer	Manufacturer	Monitor	Serial No.	Asset Tag No.	Usage ...
<input checked="" type="checkbox"/> 1	WORKGROUP		testPC1	Eizo Corporat...	EV2303W/	12345678		4031h
<input type="checkbox"/> 2	WORKGROUP		testPC1	Eizo Corporat...	EV2336W/	12345679		625h
<input checked="" type="checkbox"/> 3	WORKGROUP		testPC2	Eizo Corporat...	EV2316W/	12345690		425h
<input type="checkbox"/> 4	WORKGROUP		testPC2	Eizo Corporat...	S1703	12345680		225h
<input checked="" type="checkbox"/> 5	WORKGROUP		testPC3	Eizo Corporat...	MONITOR...	12345681		-

### 4. Click [Delete From List]



#### Tips

- If you have mistakenly deleted a monitor to be managed, refresh the “Monitor List” view (see “2-3. Refreshing Monitor Information” (page 11)). The deleted monitor will reappear.

## ● Exporting Monitor Information

Export the information displayed in “Monitor List” view as a CSV file.

#### Tips

- All of the monitor information that appears in the “Monitor List” is exported.

### 1. From the menu bar, select [File] - [Export Monitor List]

The “Save As” dialog box appears.

### 2. In the “Save As” dialog box, specify the location and file name, then click [Save]

## 3-3. Operating Monitors

Turn the client monitors on and off, configure the Auto EcoView feature, adjust the brightness and Locking Buttons.

### Note

- Operations are applied to all the client monitors connected to the same computer as the selected monitor.
- The monitor cannot be turned on or off while the log on screen is displayed on the client computer.

### 1. Select the target client monitor from the “Monitor List” view

Select the checkbox in the “No.” column of the list view.

No.	Domain/Workg...	Location	Computer	Manufacturer	Monitor	Serial No.	Asset Tag No.	Usage ...
<input checked="" type="checkbox"/> 1	WORKGROUP		testPC1	Eizo Corporat...	EV2303W	12345678		4031h
<input type="checkbox"/> 2	WORKGROUP		testPC1	Eizo Corporat...	EV2336W	12345679		625h
<input checked="" type="checkbox"/> 3	WORKGROUP		testPC2	Eizo Corporat...	EV2316W	12345690		425h
<input type="checkbox"/> 4	WORKGROUP		testPC2	Eizo Corporat...	S1703	12345680		225h
<input checked="" type="checkbox"/> 5	WORKGROUP		testPC3	Eizo Corporat...	MONITOR...	12345681		-
<input type="checkbox"/> 6	WORKGROUP		testPC3	Eizo Corporat...	MONITOR...	12345682		-

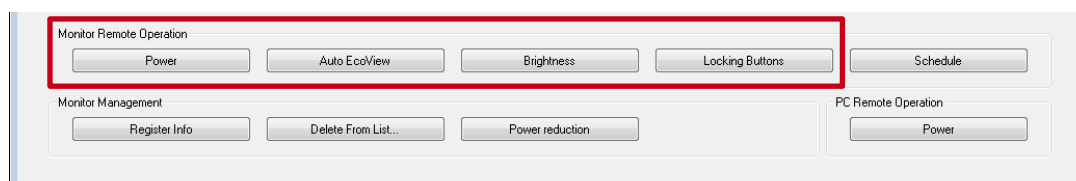
### Tips

- Click “Select All” to select all the checkboxes at once.
- Click “Release All” to clear all the checkboxes at once.

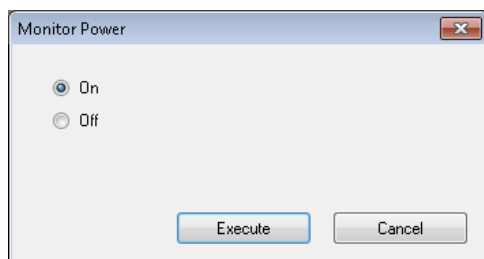
### 2. Click the button of the feature to operate

### Note

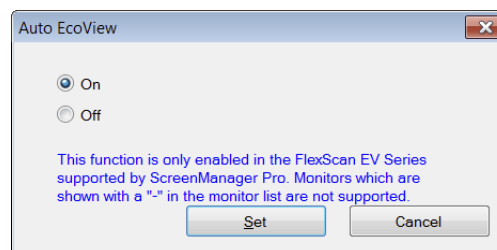
- [Auto EcoView], [Brightness], and [Locking Buttons] are only enabled when a monitor that supports monitor adjustment via USB is selected.



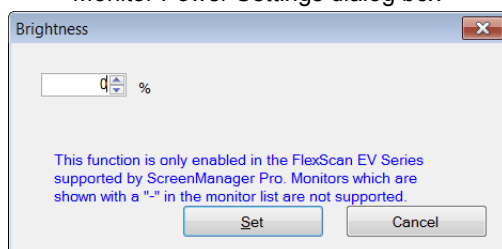
### 3. Select the operation to execute or the setting to configure, and click [Execute] or [Set]



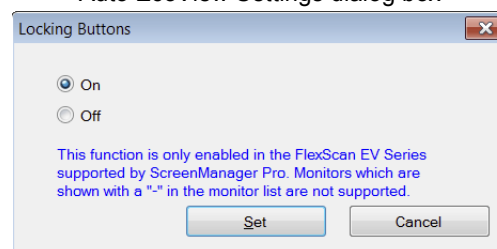
Monitor Power Settings dialog box



Auto EcoView Settings dialog box



Brightness Settings dialog box



Locking Buttons Settings dialog box

The results of the operation you selected in step 1 are reflected in the monitor.

## 3-4. Registering a Power Schedule

Create a schedule to turn the power of client monitors on or off.

### Note

- The schedule is registered not only with the selected monitor, but also with the other client monitors connected to the same PC.
- If you register a schedule with multiple monitors selected, any existing schedules will be overwritten.
- When you register a schedule, any schedules set individually for the client computer are overwritten.
- Operations cannot be performed while the log on screen is displayed on the client computer.

### 1. Select the target client monitor from the “Monitor List” view

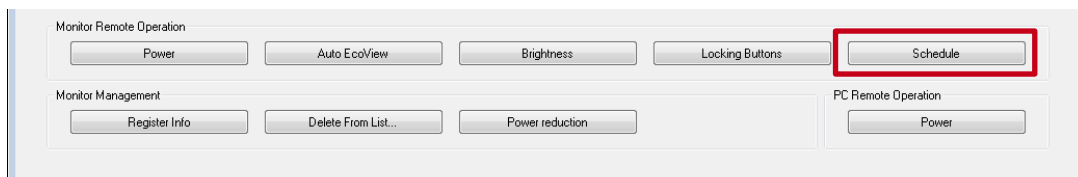
Select the checkbox in the “No.” column of the list view.

No.	Domain/Workg...	Location	Computer	Manufacturer	Monitor	Serial No.	Asset Tag No.	Usage ...
<input checked="" type="checkbox"/> 1	WORKGROUP		testPC1	Eizo Corporat...	EV2303W	12345678		4031h
<input type="checkbox"/> 2	WORKGROUP		testPC1	Eizo Corporat...	EV2336W	12345679		625h
<input checked="" type="checkbox"/> 3	WORKGROUP		testPC2	Eizo Corporat...	EV2316W	12345690		425h
<input type="checkbox"/> 4	WORKGROUP		testPC2	Eizo Corporat...	S1703	12345680		225h
<input checked="" type="checkbox"/> 5	WORKGROUP		testPC3	Eizo Corporat...	MONITOR...	12345681		-
<input type="checkbox"/> 6	WORKGROUP		testPC3	Eizo Corporat...	MONITOR...	12345682		-

### Tips

- Click “Select All” to select all the checkboxes at once.
- Click “Release All” to clear all the checkboxes at once.

### 2. Click [Schedule]

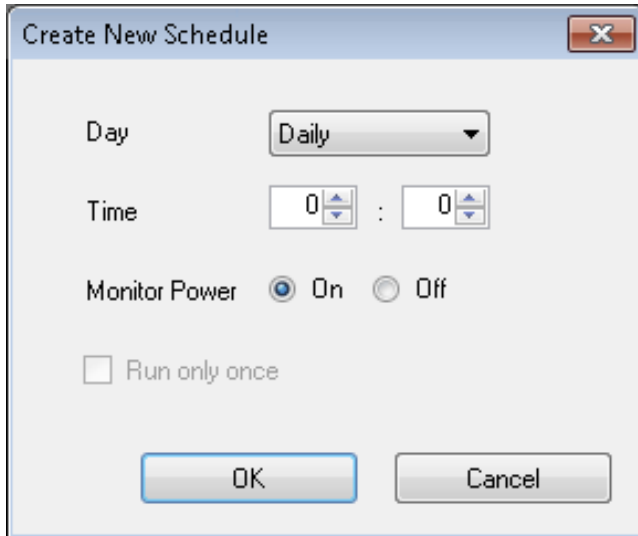


The “Register Schedule” dialog box appears.



## ● Creating a Schedule

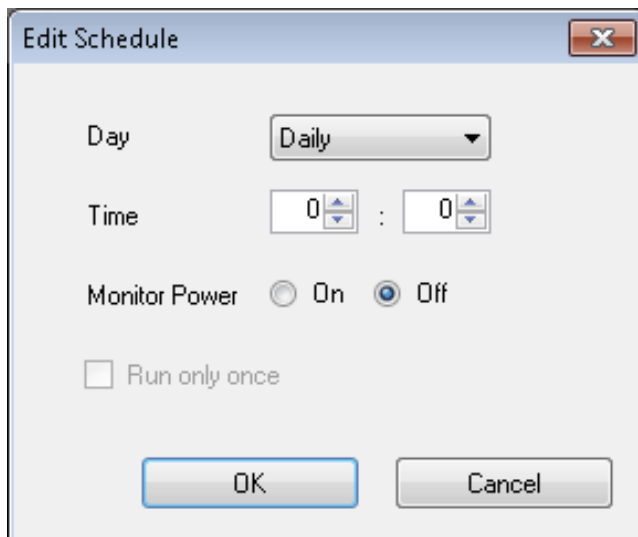
1. Click [New]
2. After the “Create New Schedule” dialog box appears, set the day, time and action to perform (turn power on/off)  
Clicking the “Run only once” to create the schedule performed once.



3. Click [OK]  
The created schedule appears in the Schedule List.

## ● Editing a Schedule

1. Click the row of the schedule to edit  
The selected row is highlighted.
2. Click [Edit]
3. After the “Edit Schedule” dialog box appears, edit the schedule's settings



4. Click [OK]  
The edited schedule appears in the Schedule List.

### ● **Deleting a Schedule**

1. Click the row of the schedule to delete  
The selected row is highlighted.
2. Click [Delete]  
The schedule is deleted from the Schedule List.

### **4. Click [Register]**

The schedule is registered for all monitors you selected in step 1.



## 3-5. Registering Monitor Management Information

Register the location and asset tag number of a client monitor.

### Note

- If multiple monitors are selected, all existing management information will be overwritten.

### 1. Select the target client monitor from the “Monitor List” view

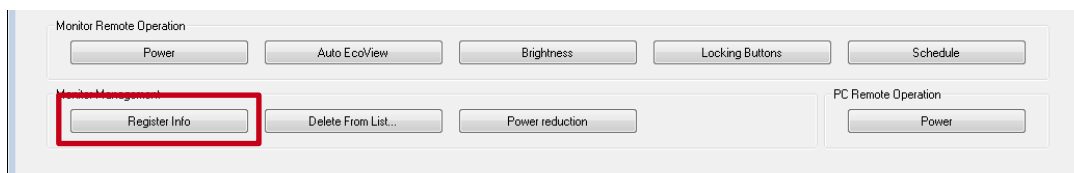
Select the checkbox in the “No.” column of the list view.

No.	Domain/Workg...	Location	Computer	Manufacturer	Monitor	Serial No.	Asset Tag No.	Usage ...
<input checked="" type="checkbox"/> 1	WORKGROUP		testPC1	Eizo Corporat...	EV2303W	12345678		4031h
<input type="checkbox"/> 2	WORKGROUP		testPC1	Eizo Corporat...	EV2336W	12345679		625h
<input checked="" type="checkbox"/> 3	WORKGROUP		testPC2	Eizo Corporat...	EV2316W	12345690		425h
<input type="checkbox"/> 4	WORKGROUP		testPC2	Eizo Corporat...	S1703	12345680		225h
<input checked="" type="checkbox"/> 5	WORKGROUP		testPC3	Eizo Corporat...	MONITOR...	12345681		-

### Tips

- Click “Select All” to select all the checkboxes at once.
- Click “Release All” to clear all the checkboxes at once.

### 2. Click [Register Info]



The “Register Management Information of Monitor” dialog box appears.

### 3. After the “Register Management Information of Monitor” dialog box appears, input the location and asset tag number

Location	Enter information about the client monitor (e.g. as the location) (within 32 characters).
Asset Tag No.	Enter the asset tag number of the client monitor (within 32 characters). * Only enabled when one monitor is selected.

### 4. Click [Register]

The asset management information is saved, and the information appears in the “Monitor List” view.

## 3-6. Displaying the Amount of Power Reduction

The amount of power reduction (%) for the client monitor is displayed.

### Note

- Appears only on monitors that support monitor adjustment via USB.
- The amount of power reduction (%) is displayed as a reference.

### 1. Select the target client monitor from the “Monitor List” view

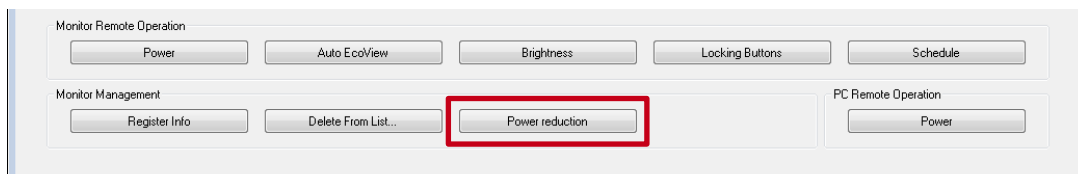
Select the checkbox in the “No.” column of the list view.

No.	Domain/Workg...	Location	Computer	Manufacturer	Monitor	Serial No.	Asset Tag No.	Usage ...
<input checked="" type="checkbox"/> 1	WORKGROUP		testPC1	Eizo Corporat...	EV2303W	12345678		4031h
<input type="checkbox"/> 2	WORKGROUP		testPC1	Eizo Corporat...	EV2336W	12345679		625h
<input checked="" type="checkbox"/> 3	WORKGROUP		testPC2	Eizo Corporat...	EV2316W	12345690		425h
<input type="checkbox"/> 4	WORKGROUP		testPC2	Eizo Corporat...	S1703	12345680		225h
<input checked="" type="checkbox"/> 5	WORKGROUP		testPC3	Eizo Corporat...	MONITOR...	12345681		-

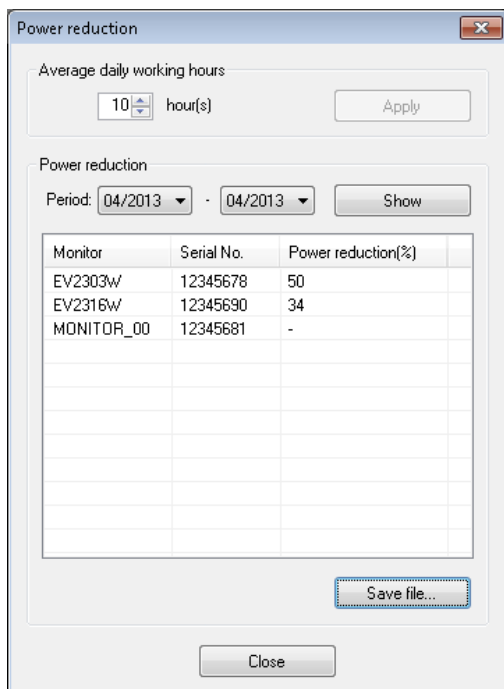
### Tips

- Click “Select All” to select all the checkboxes at once.
- Click “Release All” to clear all the checkboxes at once.

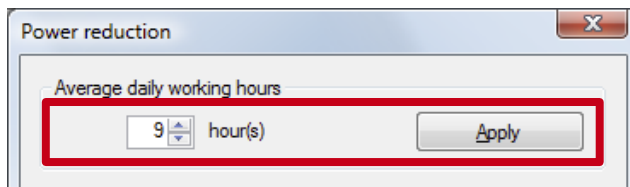
### 2. Click [Power reduction]



The “Power reduction” dialog box appears.



### 3. Set the average daily working hours



The default setting is 10 hours. Click [Apply] to complete the setting.

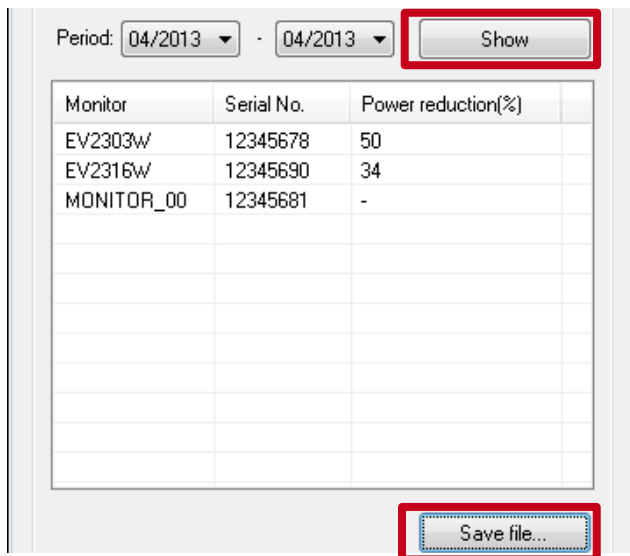
#### 4. Set the period for checking



#### 5. Click [Show]

The amount of power reduction for the monitor in the list view is displayed.

To output to a CSV file, click [Save file...].



#### Tips

- Click on a column heading in the list to sort the monitor information on that column.

#### 6. Click [Close]

## 3-7. Operating Client Computers

Turn the power of client computers on and off.

### Note

- This software can only be used when the server computer and client computers are in the same domain environment.

### 1. Select the target client computer from the “Monitor List” view

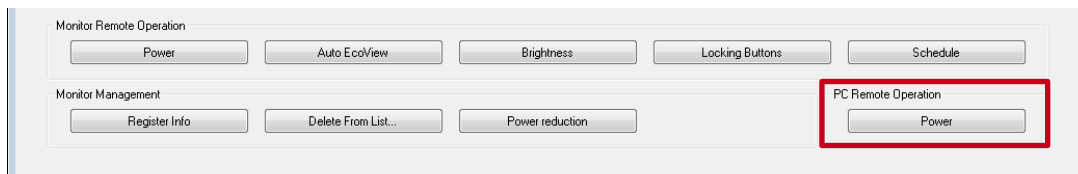
Select the checkbox in the “No.” column of the list view.

No.	Domain/Workg...	Location	Computer	Manufacturer	Monitor	Serial No.	Asset Tag No.	Usage ...
<input checked="" type="checkbox"/> 1	WORKGROUP		testPC1	Eizo Corporat...	EV2303W	12345678		4031h
<input type="checkbox"/> 2	WORKGROUP		testPC1	Eizo Corporat...	EV2336W	12345679		625h
<input checked="" type="checkbox"/> 3	WORKGROUP		testPC2	Eizo Corporat...	EV2316W	12345690		425h
<input type="checkbox"/> 4	WORKGROUP		testPC2	Eizo Corporat...	S1703	12345680		225h
<input checked="" type="checkbox"/> 5	WORKGROUP		testPC3	Eizo Corporat...	MONITOR...	12345681		-

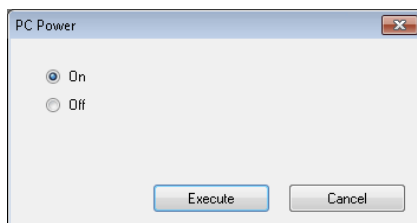
### Tips

- Click “Select All” to select all the checkboxes at once.
- Click “Release All” to clear all the checkboxes at once.

### 2. Click [Power off]



### 3. After the “PC Power” dialog box appears, select the desired power status



### 4. Click [Execute]

# Chapter 4 EIZO EcoView NET Client

EIZO EcoView NET Client is a software for communicating with a server computer in order to control the client monitor. You can use it to configure monitor power and register schedules for the individual client computer.

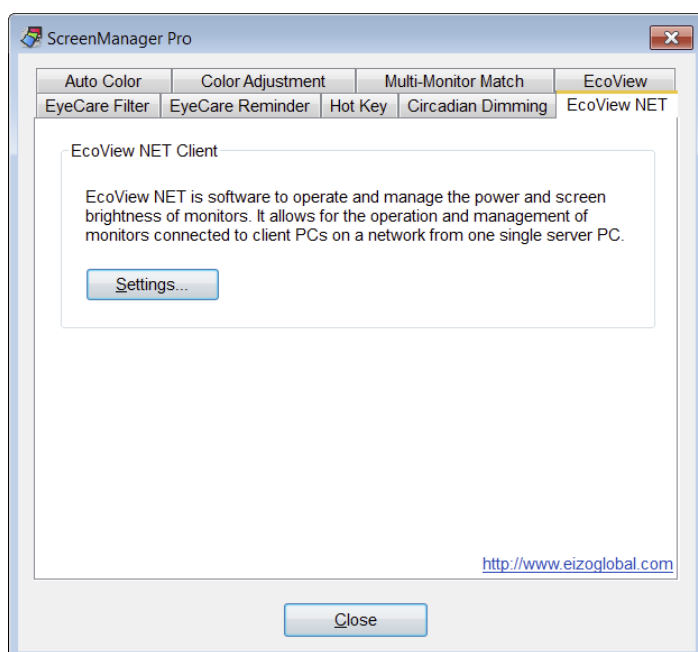
## 4-1. Startup and Exit

### ● Startup

#### 1. Double-click the ScreenManager Pro icon in the notification area

The ScreenManager Pro setting window appears.

#### 2. In the [EcoView NET] tab, click “Settings”



“EIZO EcoView NET Client” appears.

### ● Exit

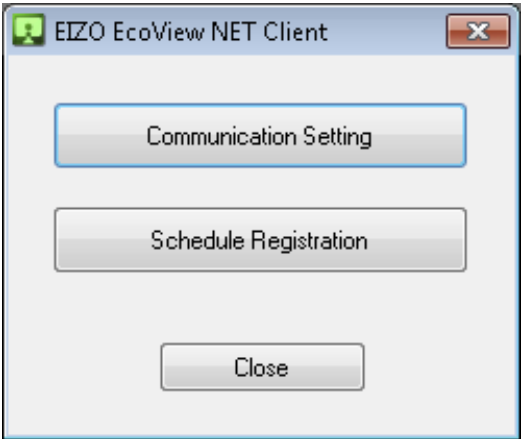
Click [Close].

### ● Confirm Version Information

Right click on the title bar, and select [About EIZO EcoView NET Client].

# 4-2. Setup Dialog Box

When the software starts, the “EIZO EcoView NET Client” setup dialog box appears.



Communication Setting	Configure the network (See “2-2. Setting Up the Client Computer” (page 10)).
Schedule Registration	Create a power schedule for this client only (See “4-3. Registering a Power Schedule” (page 31)).

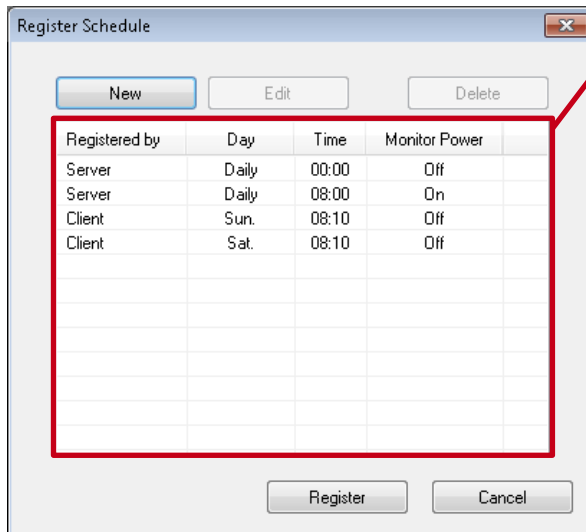
## 4-3. Registering a Power Schedule

### Note

- When a schedule is registered from the server computer (EIZO EcoView NET Server), all the schedules registered from the client computer will be deleted.

### 1. Click [Schedule Registration]

### 2. After the “Register Schedule” dialog box appears, create, edit, or delete a schedule



The "Register Schedule" dialog box contains three buttons at the top: "New", "Edit", and "Delete". Below these is a table with four columns: "Registered by", "Day", "Time", and "Monitor Power". The table contains four rows of data. A red rectangle highlights the table area. At the bottom of the dialog are "Register" and "Cancel" buttons.

Registered by	Day	Time	Monitor Power
Server	Daily	00:00	Off
Server	Daily	08:00	On
Client	Sun.	08:10	Off
Client	Sat.	08:10	Off

### Schedule List

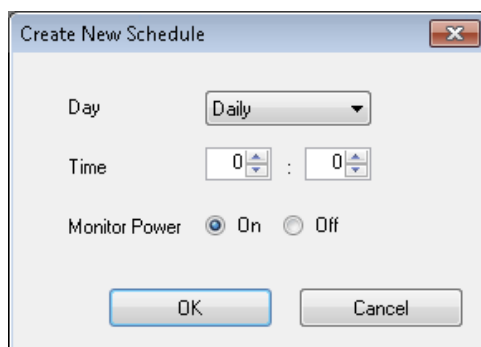
Registrant	The person registering the schedule <ul style="list-style-type: none"><li>• Server ...Schedule registered from the server computer</li><li>• Client ...Schedule registered from the client computer</li></ul>
Day	The day of the week to turn the power on or off
Time	The time to turn the power on or off
Monitor Power	The action to perform on the power

### Note

- The edit and delete functions are only available if the registrant is the client.

### ● Creating a Schedule

- Click [New]
- After the “Create New Schedule” dialog box appears, set the day, time and action to perform (turn power on/off)

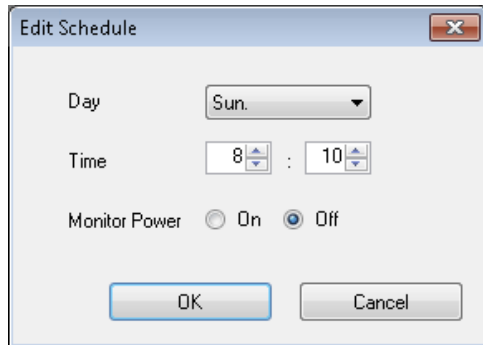


The "Create New Schedule" dialog box has three input fields: "Day" with a dropdown menu showing "Daily", "Time" with two spinners set to "0" and "0", and "Monitor Power" with radio buttons for "On" (selected) and "Off". At the bottom are "OK" and "Cancel" buttons.

- Click [OK]

### ● Editing a Schedule

1. Click the row of the schedule to edit  
The selected row is highlighted.
2. Click [Edit]
3. After the “Edit Schedule” dialog box appears, edit the schedule’s settings



4. Click [OK]

### ● Deleting a Schedule

1. Click the row of the schedule to delete  
The selected row is highlighted.
2. Click [Delete]

## 3. Click [Register]

The schedule is saved.



# Chapter 5 Troubleshooting

## EIZO EcoView NET Server

Problem	Possible cause and remedy
<ul style="list-style-type: none"><li>• The software cannot be installed</li></ul>	<ul style="list-style-type: none"><li>• Confirm that your computer satisfies the operating requirements (see <a href="#">page 5</a>).</li></ul>
<ul style="list-style-type: none"><li>• The client monitor is not displayed in the "Monitor List" view</li><li>• The client monitor cannot be operated</li></ul>	<ul style="list-style-type: none"><li>• Check that all cables, such as network cables, are properly connected.</li><li>• Check that the network settings for the server and client computers are correct. Perform the necessary checks as per the setup procedure for each software.</li><li>• Check that EIZO EcoView NET Client is installed on the client computer.</li><li>• Check that equivalent versions of EIZO EcoView NET Server and EIZO EcoView NET Client are installed.</li><li>• Check that the client monitor is turned on.</li><li>• Check that the client monitor model supports monitor adjustment via USB.</li><li>• When using a non-Windows standard firewall on the client computer or server computer, confirm the setting.</li><li>• Try rebooting the client computer .</li></ul>
<ul style="list-style-type: none"><li>• The amount of power reduction for the client monitor is not displayed</li></ul>	<ul style="list-style-type: none"><li>• Check that the client monitor model supports monitor adjustment via USB.</li><li>• Check the period for checking.</li></ul>
<ul style="list-style-type: none"><li>• The client monitor cannot be turned on</li></ul>	<ul style="list-style-type: none"><li>• Try rebooting the computer with the client monitor switched on.</li><li>• The client monitor cannot be turned on or off while the log on screen is displayed on the client computer.</li></ul>
<ul style="list-style-type: none"><li>• The client monitor cannot be turned off</li></ul>	<ul style="list-style-type: none"><li>• When an EIZO LCD monitor is used, try enabling the monitor's power saving setting.</li><li>• The client monitor cannot be turned on or off while the log on screen is displayed on the client computer.</li></ul>
<ul style="list-style-type: none"><li>• The client computer cannot be turned on or off</li></ul>	<ul style="list-style-type: none"><li>• Check that the client computer is in the same domain environment as the server computer.</li><li>• Check that the WOL (Wake On Lan) settings are correctly configured on the client computer and server computer.</li></ul>

## EIZO Ecoview NET Client

Problem	Possible cause and remedy
<ul style="list-style-type: none"><li>• The software cannot be installed</li></ul>	<ul style="list-style-type: none"><li>• Confirm that your computer satisfies the operating requirements (see <a href="#">page 6</a>).</li></ul>
<ul style="list-style-type: none"><li>• The power-on setting does not operate / the power schedule does not operate</li></ul>	<ul style="list-style-type: none"><li>• Try rebooting the computer with the client monitor switched on.</li><li>• The client monitor cannot be turned on or off while the log on screen is displayed on the client computer.</li></ul>
<ul style="list-style-type: none"><li>• Communication setting does not operate</li></ul>	<ul style="list-style-type: none"><li>• Confirm to the system administrator that EIZO EcoView NET Server is operating.</li><li>• Confirm to the system administrator that the equivalent versions of EIZO EcoView NET Server and EIZO EcoView NET Client are installed.</li><li>• When using a non-Windows standard firewall, confirm the setting.</li></ul>



**EIZO Corporation**

<http://www.eizoglobal.com>

Copyright © 2014-2015 EIZO Corporation All rights reserved.

7nd Edition-August, 2015

03V22538G1  
(U.M-ECOVIEWNET)